

**FIONN**  
**131 0311**  
**131 0314**  
**131 0317**

**MATHEA**  
**125 0391**  
**125 0398**

# Warnhinweis!

Warning notice! / Avertissement! / Waarschuwing! /  
Предупреждение!

PAIDI Möbel GmbH

Hauptstraße 87  
D-97840 Hafenlohr



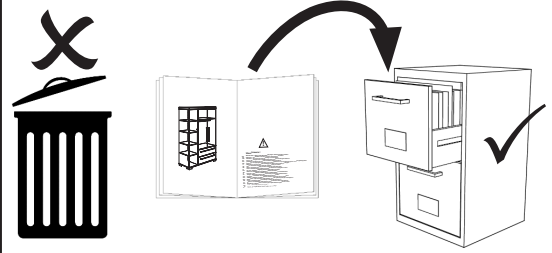
Kinderwelten

V..

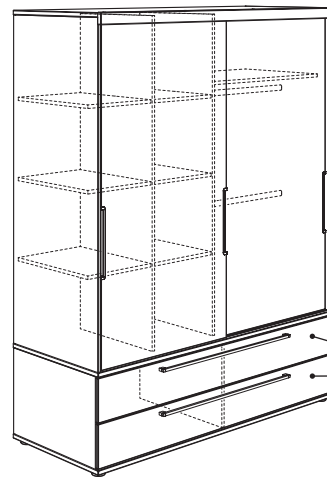
Vorbereitung / Preparation / La  
préparation/ Voorbereiding /  
подготовка

M..

Montage / Assembly /  
Assemblage / Bijeenkomst /  
МОНТАЖ



siehe PK-Nr. 2800



max.  
15 Kg

## Warnhinweis !

DE Warnhinweis ! Beiliegende Wandbefestigungen müssen montiert werden !  
FR Attention ! Les fixations murales ci-jointes doivent être montées !  
GB Attention ! The enclosed wall mountings must be fitted !  
NL Let op ! De meegeleverde wandbevestigingen moeten worden gemonteerd !  
ES ¡Atención! Las fijaciones murales incluidas deben montarse  
GR Προσοχή ! Τα εξαρτήματα στήριξης που περιλαμβάνονται στη συσκευασία πρέπει να συναρμολογηθούν !  
IT Attenzione ! Occorre montare i fissaggi per attacco alla parete qui allegati !  
CZ Pozor ! Přiložené úchytky musí být namontovány na stěnu !  
SL Pozor ! Namontirati je potrebno priložene elemente za pritrditev na zid !  
PL Uwaga ! Załączone zamocowania do ściany muszą być zamontowane !  
BG Внимание ! Приложените закрепвания за стена трябва да бъдат монтирани !  
HR Pozor ! Priložena zidna pričvršćenja moraju biti montirana !  
LT Dėmesio ! Priedamas tvirtinimo prie sienos detales reikia sumontuoti !  
RU Внимание ! Обязательно используйте прилагаемые крепления стене !  
CN 注意 ! 附带的墙壁安装组件必须安装 !  
AR تنبه! لا بد من تركيب الأدوات المرفقة للتثبيت على الحائط!

DE Pflegehinweis: Zum Reinigen der Oberflächen ein leicht-feuchtes Tuch oder ein handelsübliches Möbelpflegemittel verwenden.  
FR Indication sur l'entretien : pour nettoyer les surfaces, utiliser un chiffon légèrement humide ou un nettoyant pour meubles en vente dans le commerce  
GB Caring for the... : In order to clean the surfaces please use a slightly damp cloth or commercially available furniture care product.  
NL Verzorgingsanwijzing: Voor het reinigen van de oppervlakken een licht vochtig doek of een gebruikelijk meubelschoonmaakmiddel gebruiken.  
ES Recomendaciones de cuidado: Para limpiar las superficies del mueble debe usar un trapo humedecido o un producto de limpieza de muebles comercial.  
GR Οδηγίες περιποίησης: Για το καθαρίσμα των επιφανειών να χρησιμοποιείτε ένα ελαφρά νοτισμένο πανάκι ή λούστρο επίπλων.  
IT Indicazione per pulizia e cura: Per la pulizia delle superfici utilizzate un panno leggermente umido o un normale prodotto per la cura dei mobili.  
CZ Pokyny k čištění: Na čištění povrchu použijte pouze navlhčený kousek látky nebo běžný prostředek na ošetřování nábytku.  
SL Navodilo za nego: Za čiščenje površin uporabljajte malo vlažno cunjo ali trgovsko običajno sredstvo za nego pohištva.  
PL Wskazówka pielęgnacyjna: do czyszczenia powierzchni stosować lekko wilgotną ściereczkę lub zwykły środek do pielęgnacji mebli.  
BG Указание за поддържане: Използвайте леко навлажнена кърпа или обикновен препарат за поддържане на мебели, за да почистите повърхностите.  
HR Upute za njegu: Za čišćenje površina upotrijebiti jednu lako navlaženu krpu i trgovačko uobičajeno sredstvo za njegu namještaja.  
LT Rekomendacija priežiūrai: Paviršius valykite drėgna pašluoste arba parduotuvėse įsigytomis baldų priežiūros priemonėmis.  
RU Рекомендации по уходу: для очистки поверхностей используйте слегка влажную тряпку или обычное средство по уходу за мебелью.  
CN 保养说明: 清洁表面只需用稍微潮湿的布或普通的家具清洁剂即可。

# Beschläge

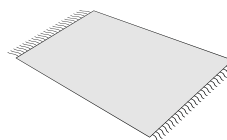
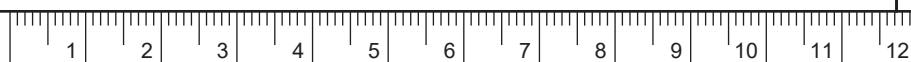
Fittings / Raccords / Fittingen / кованный

PAIDI Möbel GmbH  
Hauptstraße 87  
D-97840 Hafenlohr

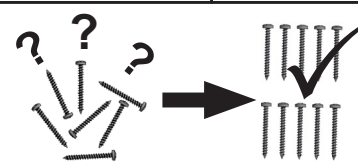


Kinderwelten

1:1  
DIN A4



ca. 2,0h



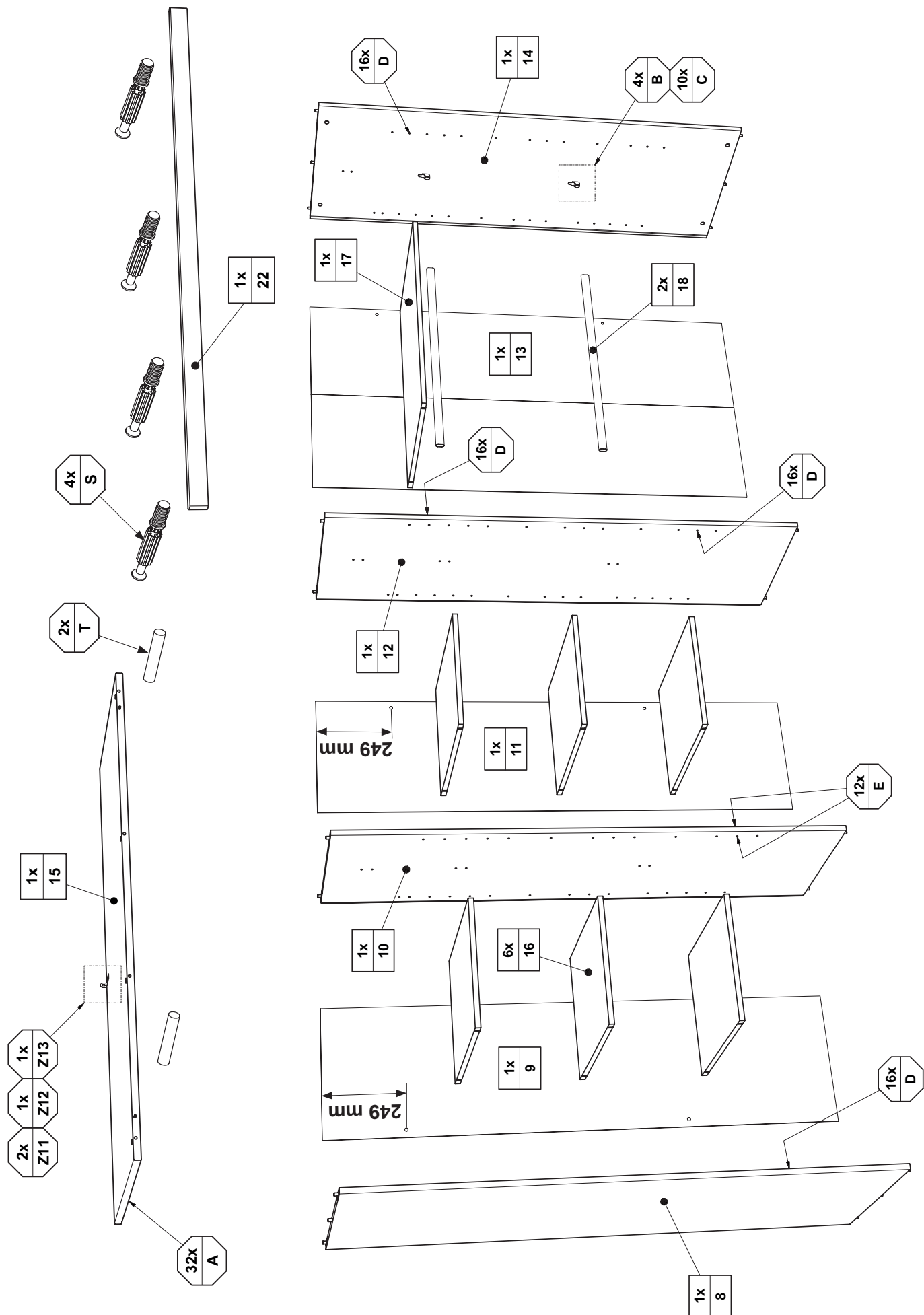
<b>A</b>  32x 681 0759	<b>B</b>  4x 681 1645	<b>C</b>  3,5 x 13 10x 681 4887	<b>D</b>  16x 681 8126	<b>E</b>  12x 681 8137	<b>F</b>  6x 681 8409	<b>G</b>  M8 6x 681 8428	<b>H</b>  6x 681 8408	<b>I</b>  M8 x 30 6x 681 8427
<b>J</b>  SW4 1x 681 3011	<b>K</b>  6x 681 2497	<b>L</b>  6,3 x 15 6x 681 5060	<b>M</b>  24x 681 2498	<b>P</b>  SW1,5 1x 681 3007	<b>Q</b>  SW3 1x 681 3009	<b>S</b>  4x 681 0757	<b>T</b>  ø5 x 25 2x 681 0351	

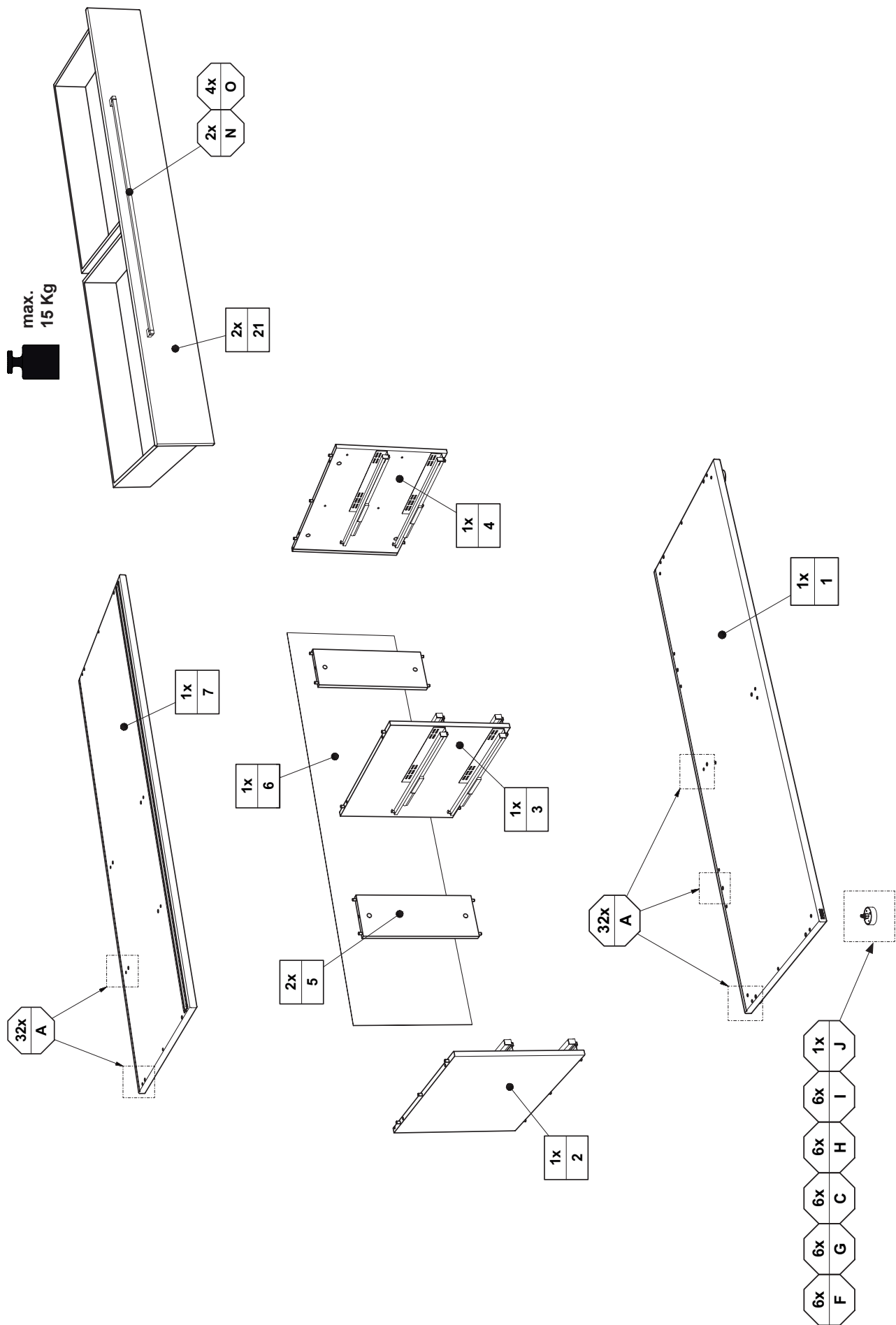
## Progr. FIONN

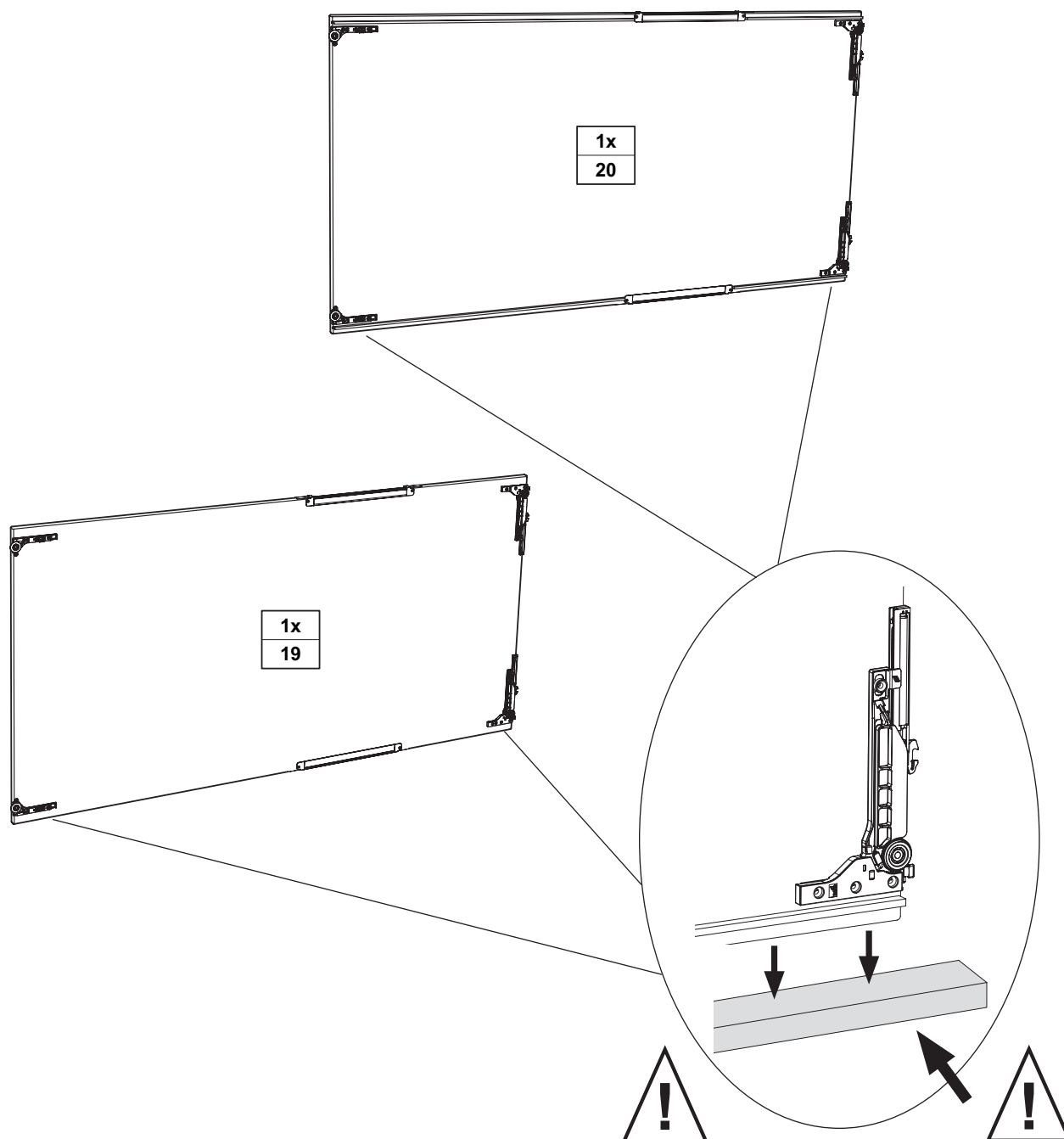
<b>N</b>  2x 671 1107	<b>O</b>  M4 x 22 4x 681 3807
--------------------------------	---

## Progr. MATHEA

<b>N</b> <b>Griffstange</b> Länge: 1050mm 2x 681 8440	<b>O</b>  M4 x 22 8x 681 3807
---	---



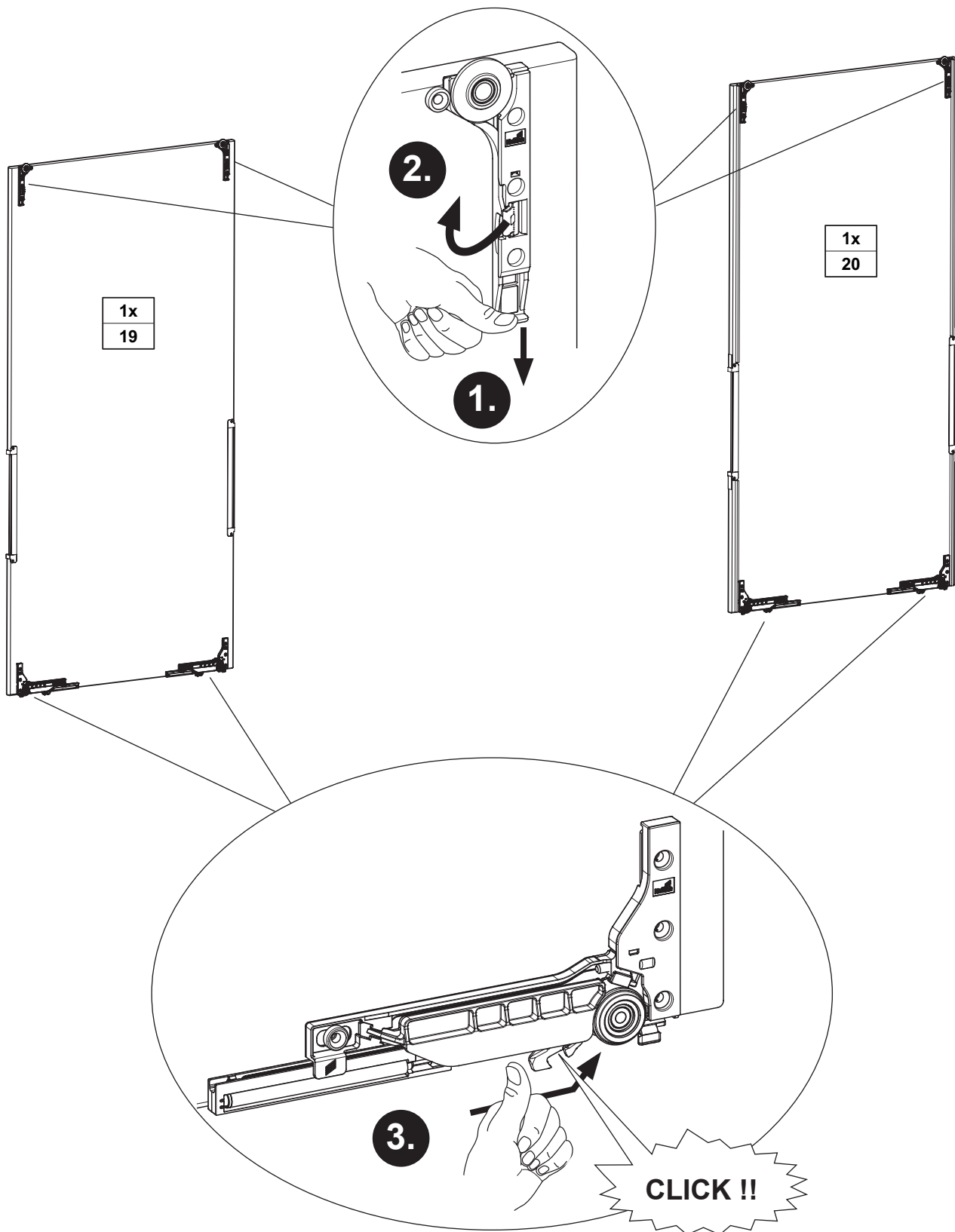


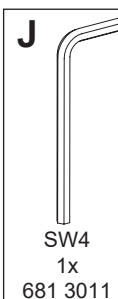
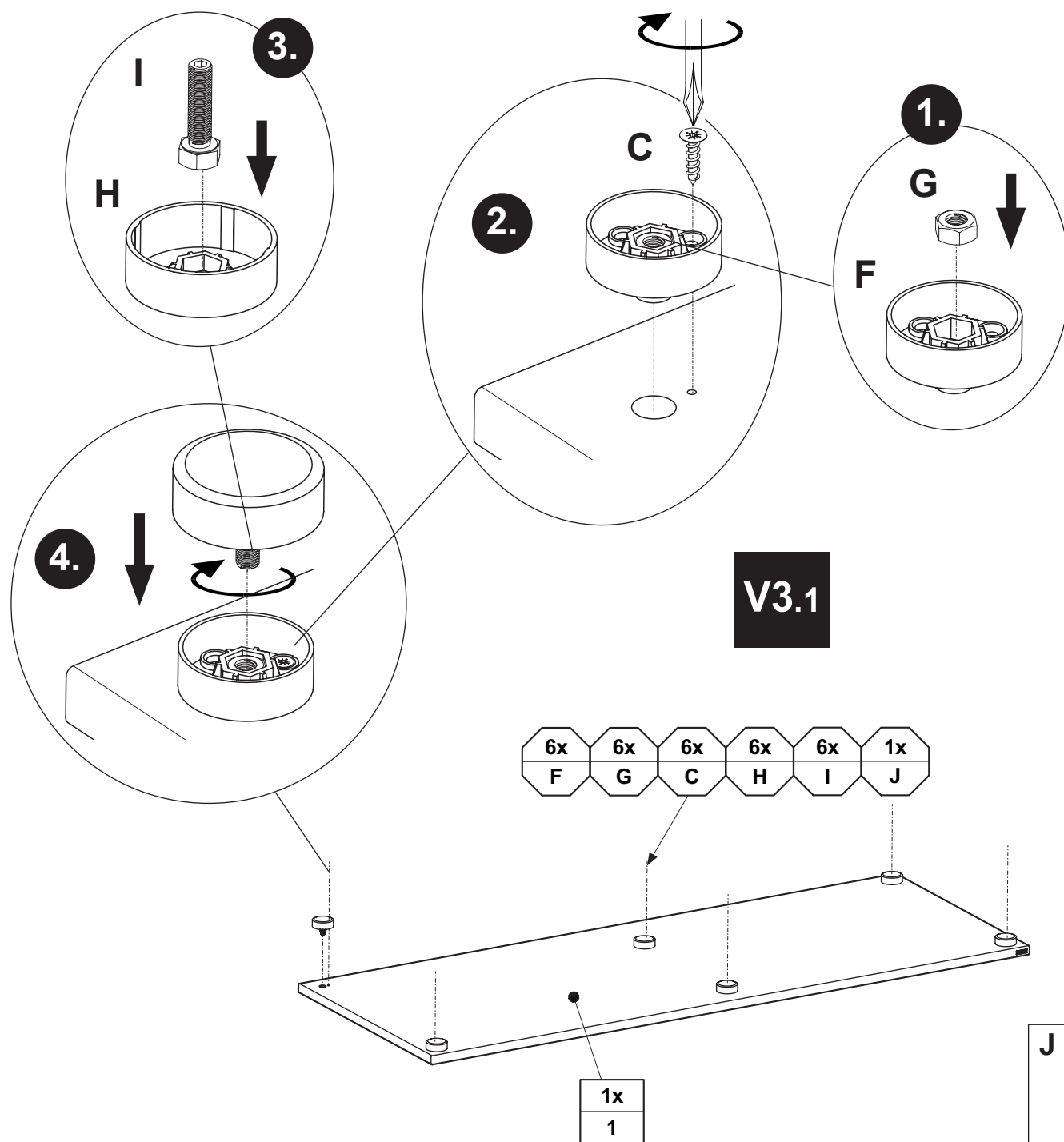


**Stellen sie die Türen nach dem Auspacken  
mit der Längskante auf die Styroporstreifen !**

# V1

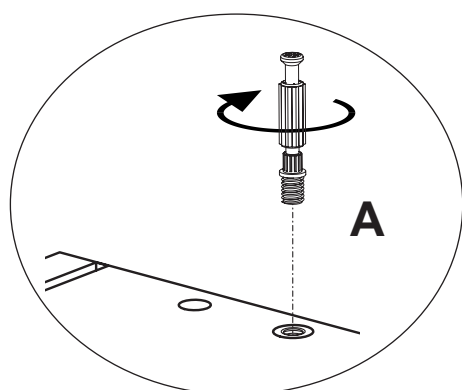
# V2



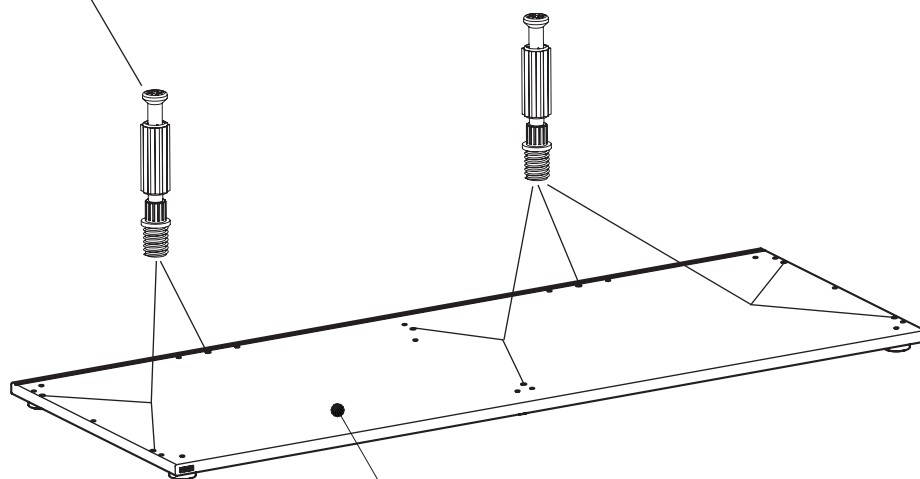


C	F	G	H	I
3,5 x 13 6x 681 4887	6x 681 8409	M8 6x 681 8428	6x 681 8408	M8 x 30 6x 681 8427



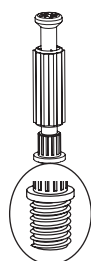


V3.2



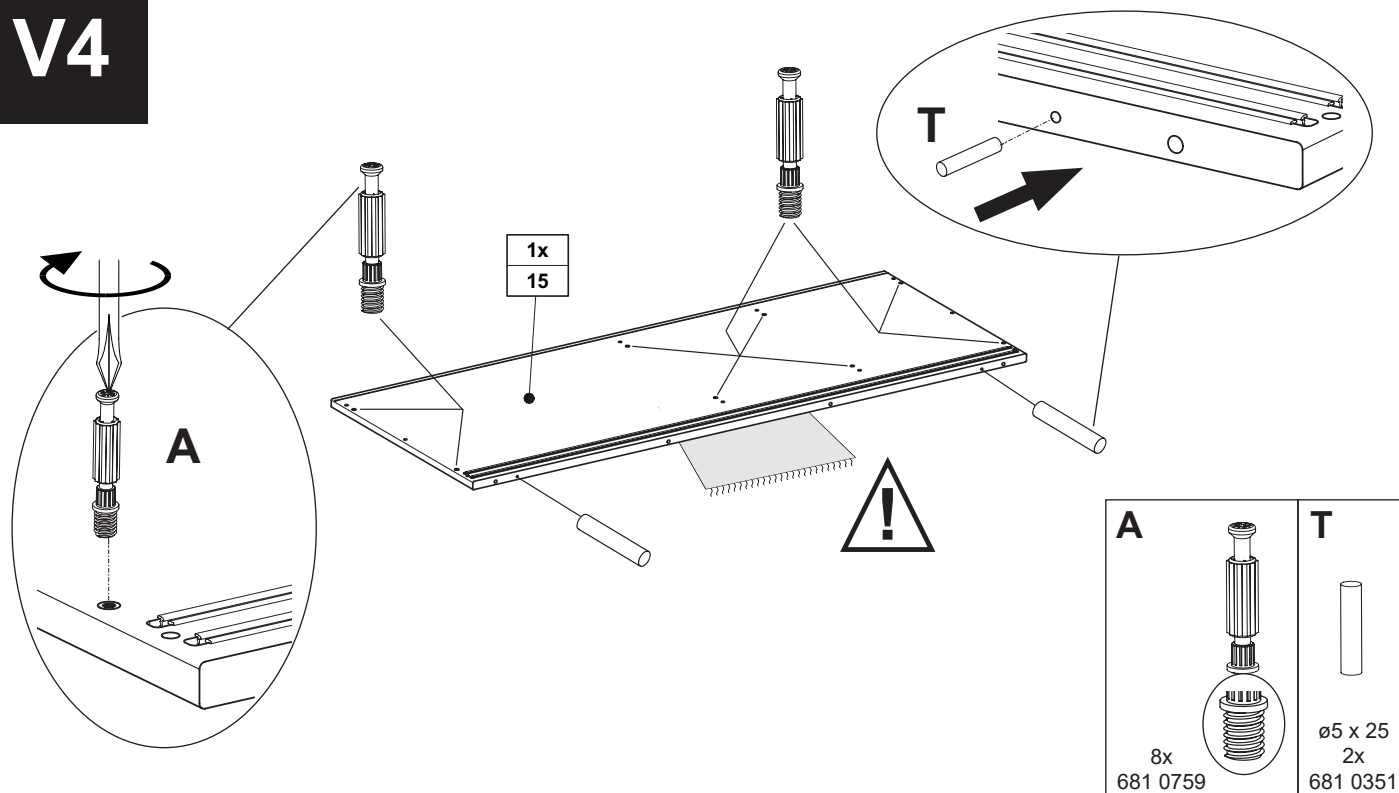
1x
1

A

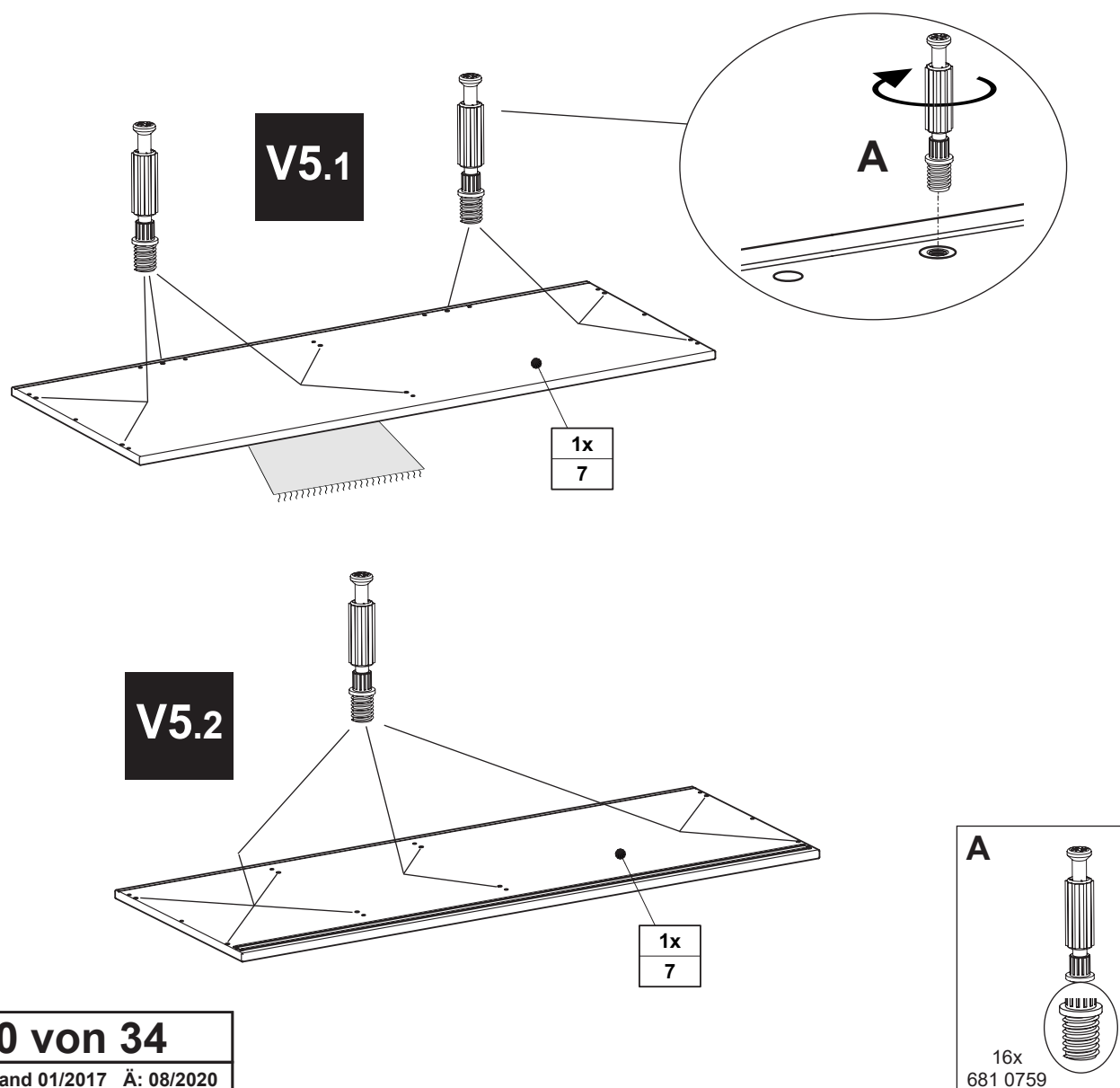


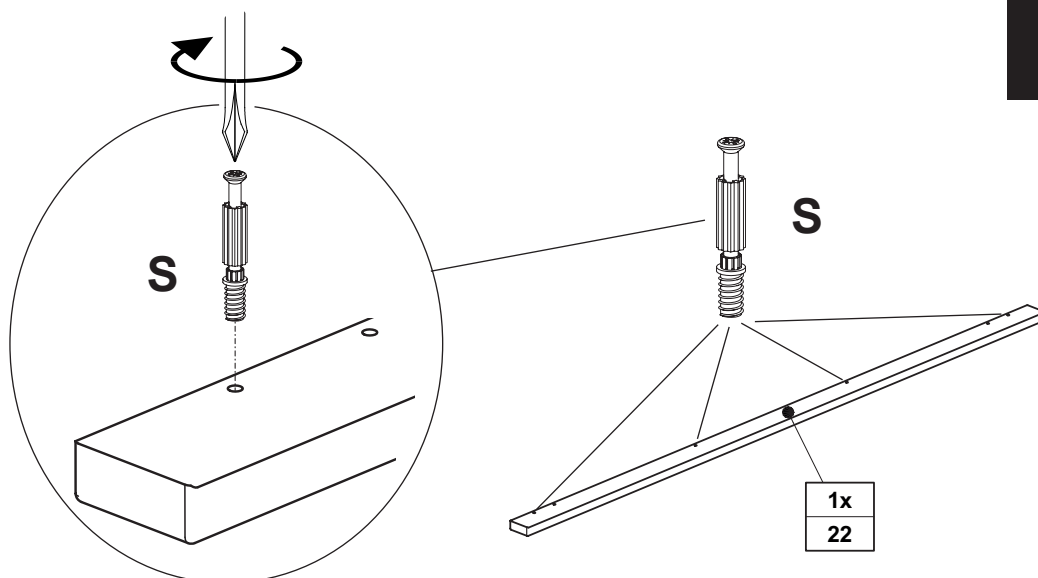
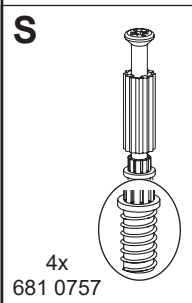
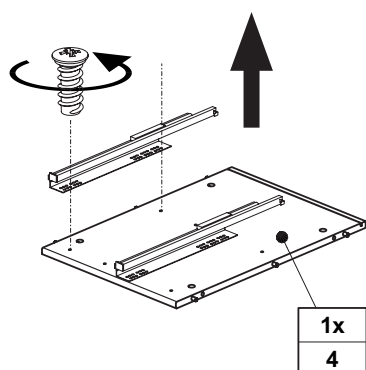
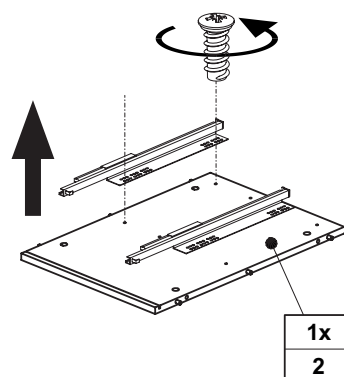
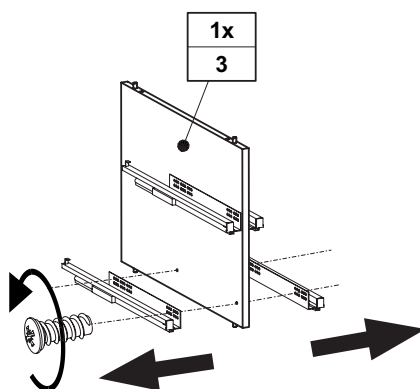
8x  
681 0759

# V4



# V5



**V6****V8****V7****V9**

# V10



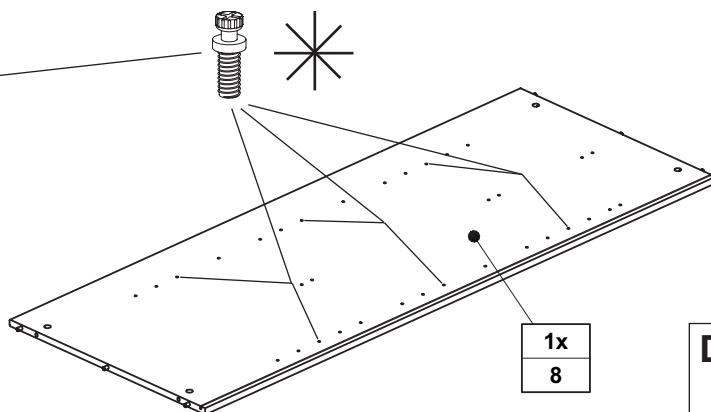
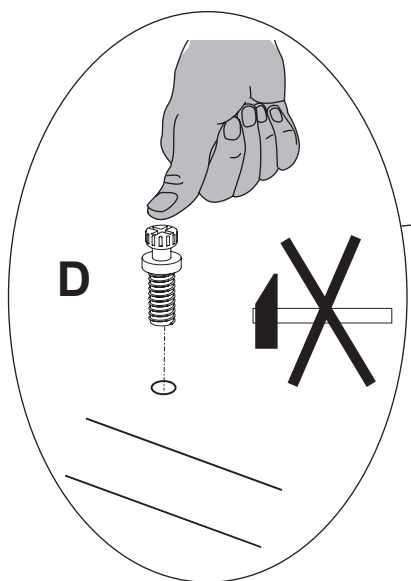
**= Einbauhöhe der Einlegeböden ist variabel !**

The installation height of the connecting floor is variable!

La hauteur d'installation du fond de raccordement est variable !

¡La altura de montaje del suelo de unión es variable!

Instalace výšky spojovacího dna je variabilní!

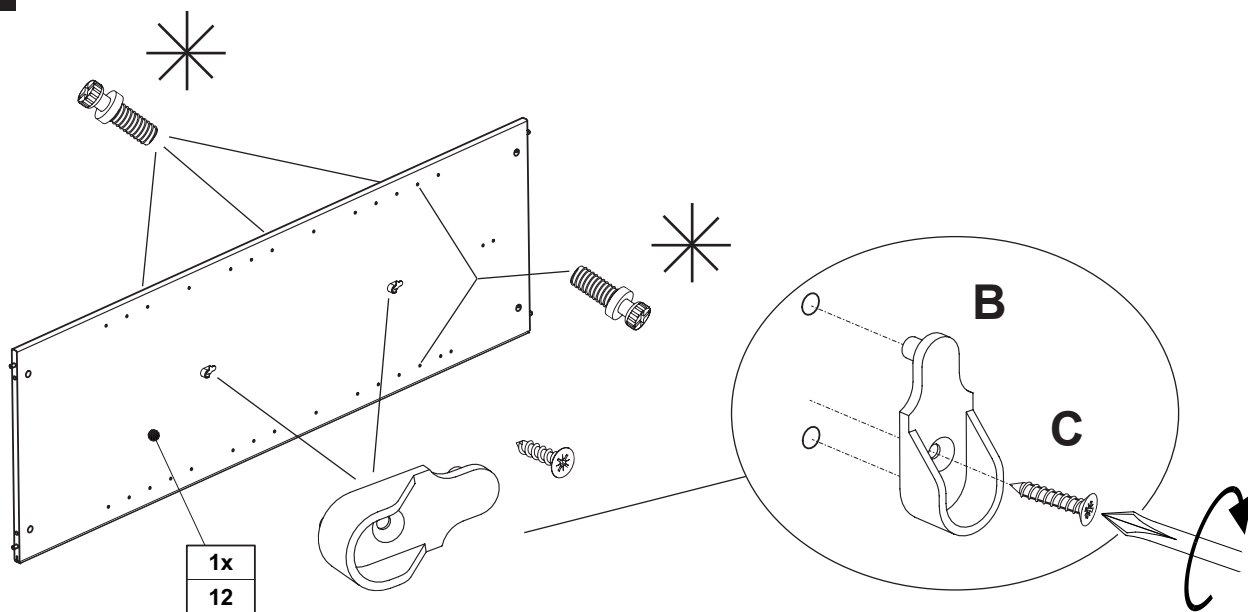


**D**



6x  
681 8126

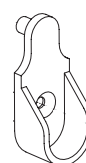
# V11



**1x**

**12**

**B**



2x  
681 1645

**C**



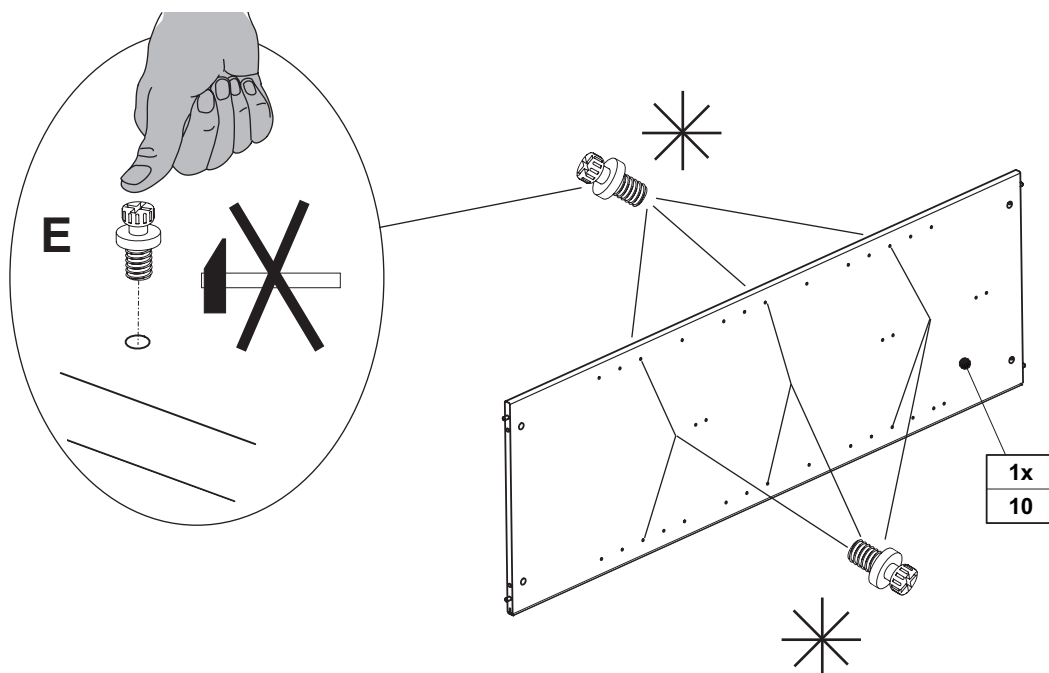
3,5 x 13  
2x  
681 4887

**D**

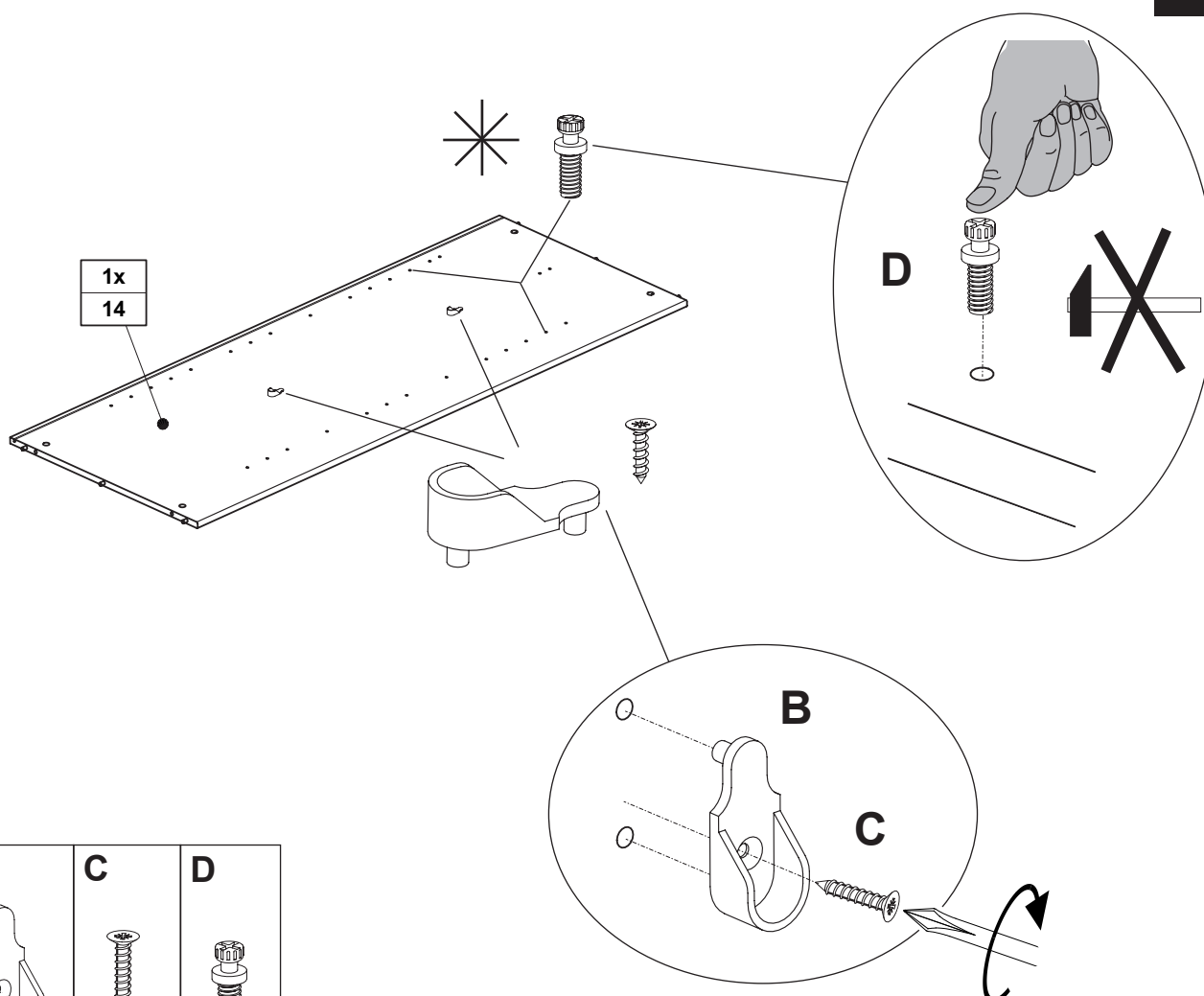


8x  
681 8126

# V12

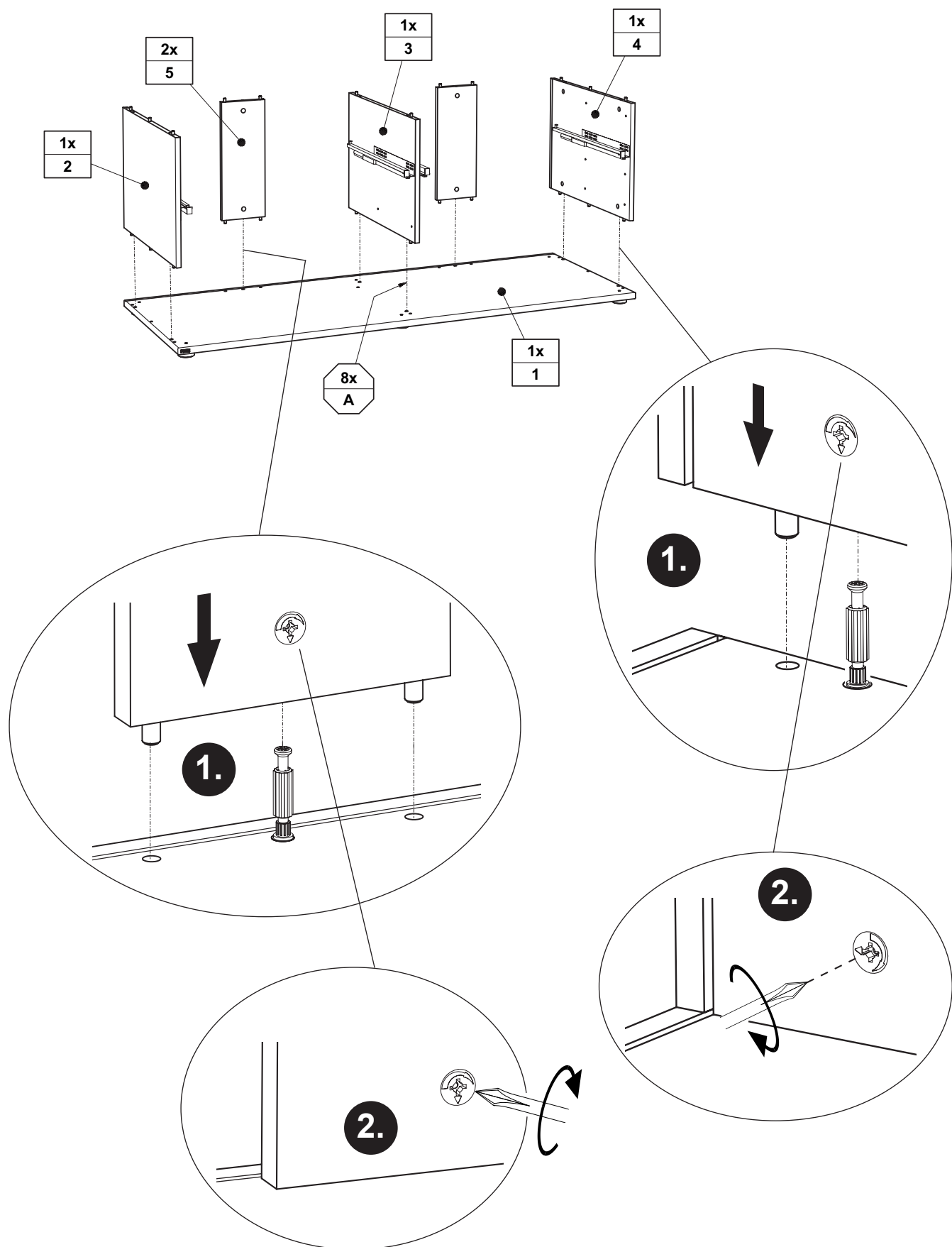


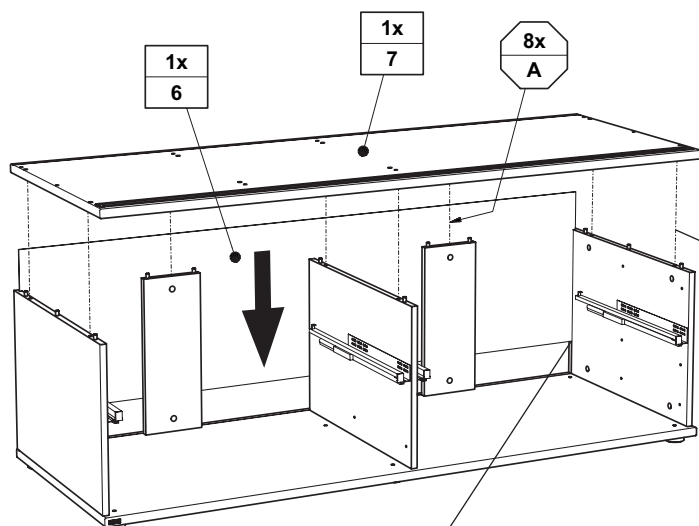
# V13



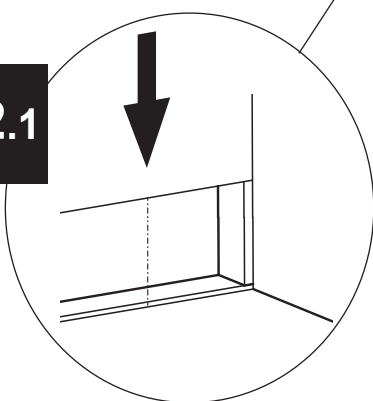
Seite 13 von 34

PK-Nr. 2705 Stand 01/2017 Ä: 08/2020

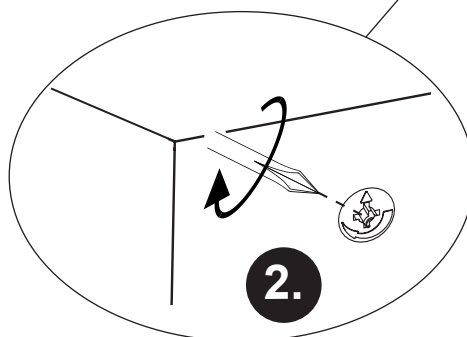
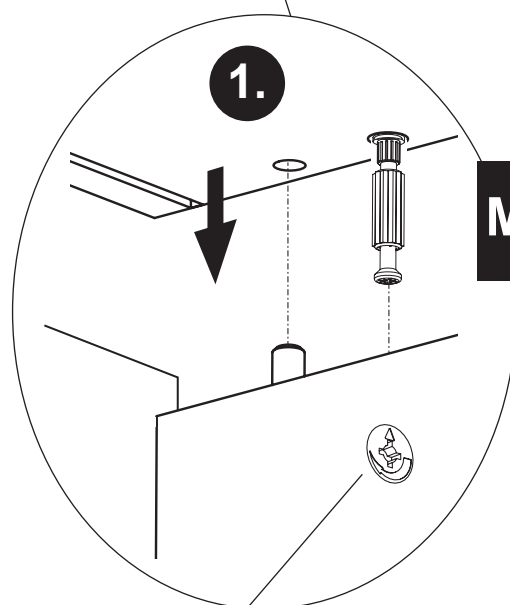




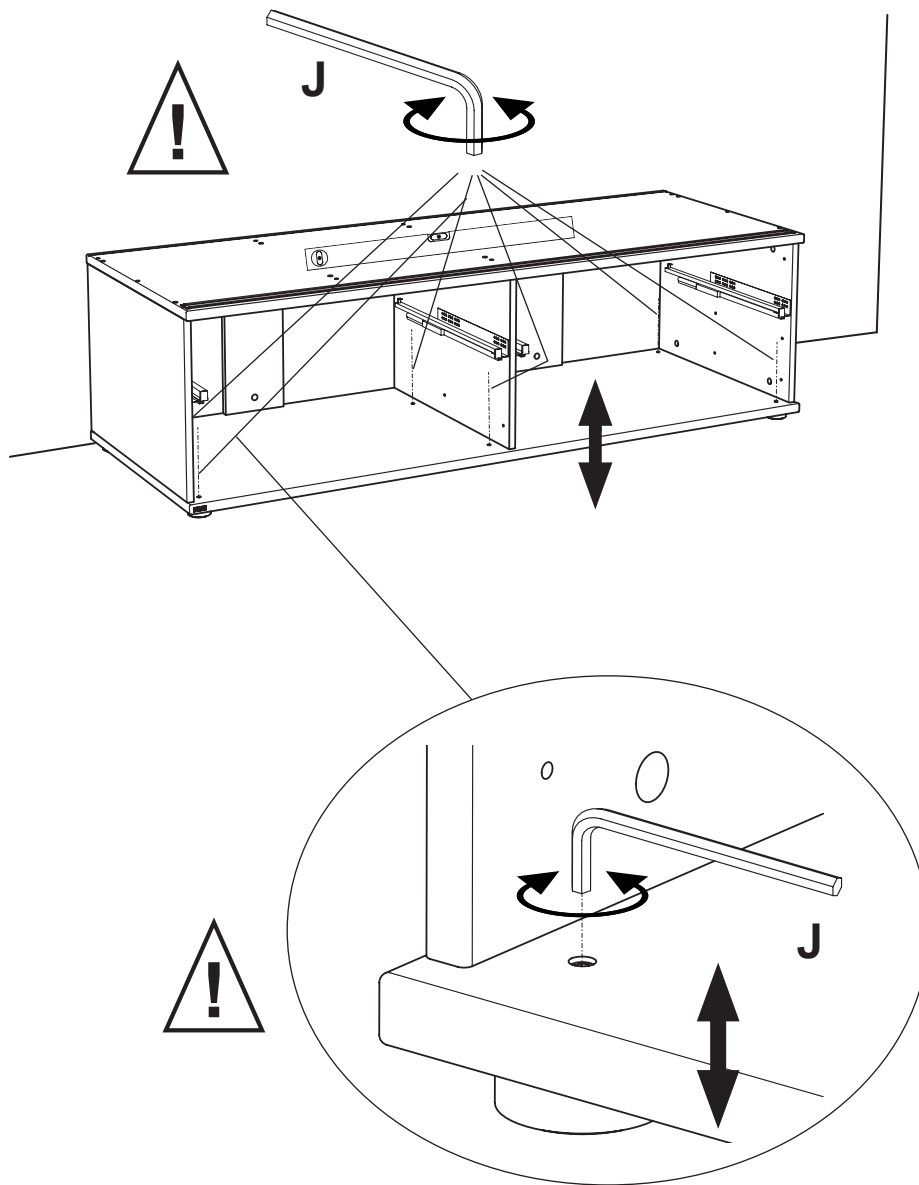
**M2.1**



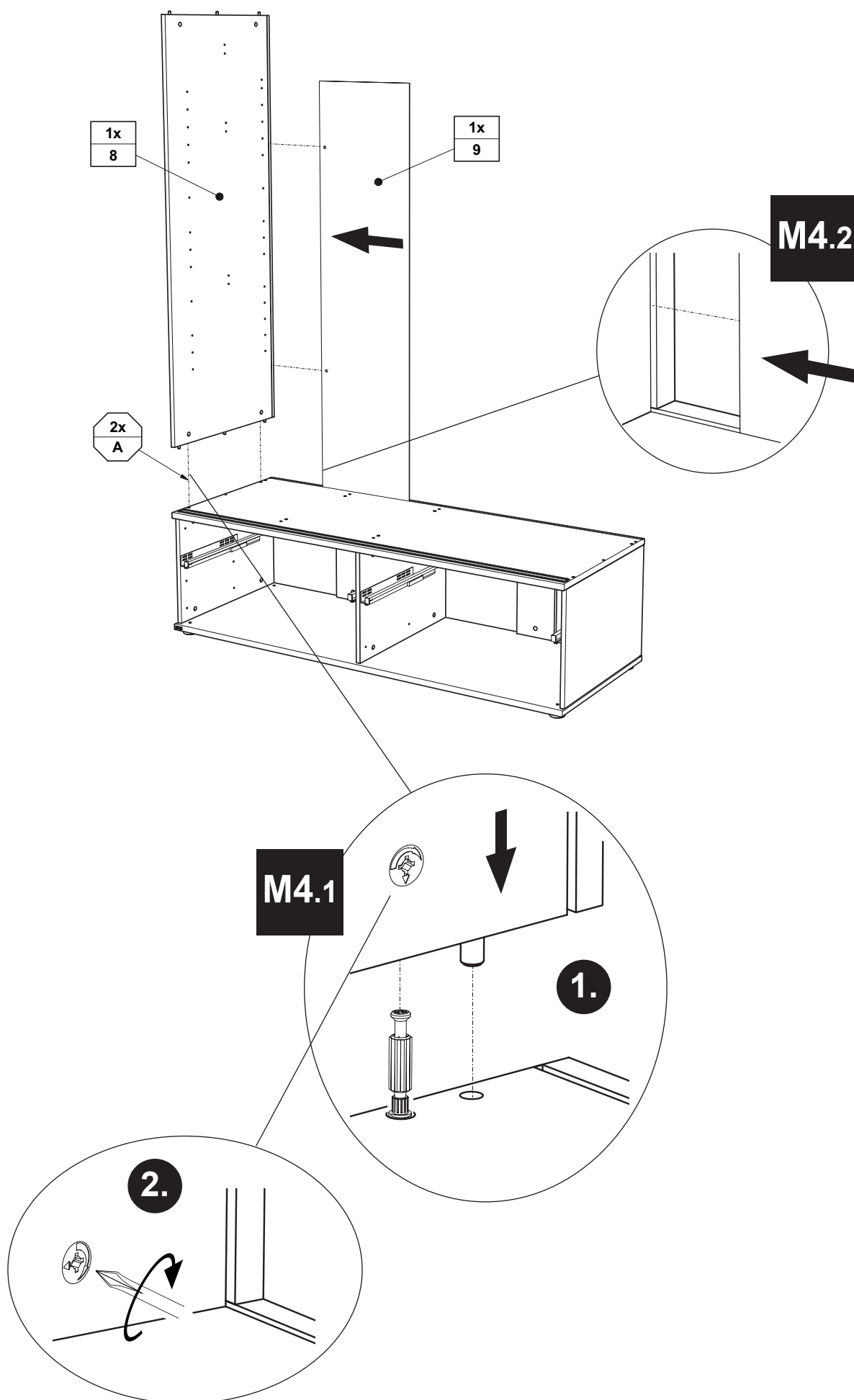
**M2.2**

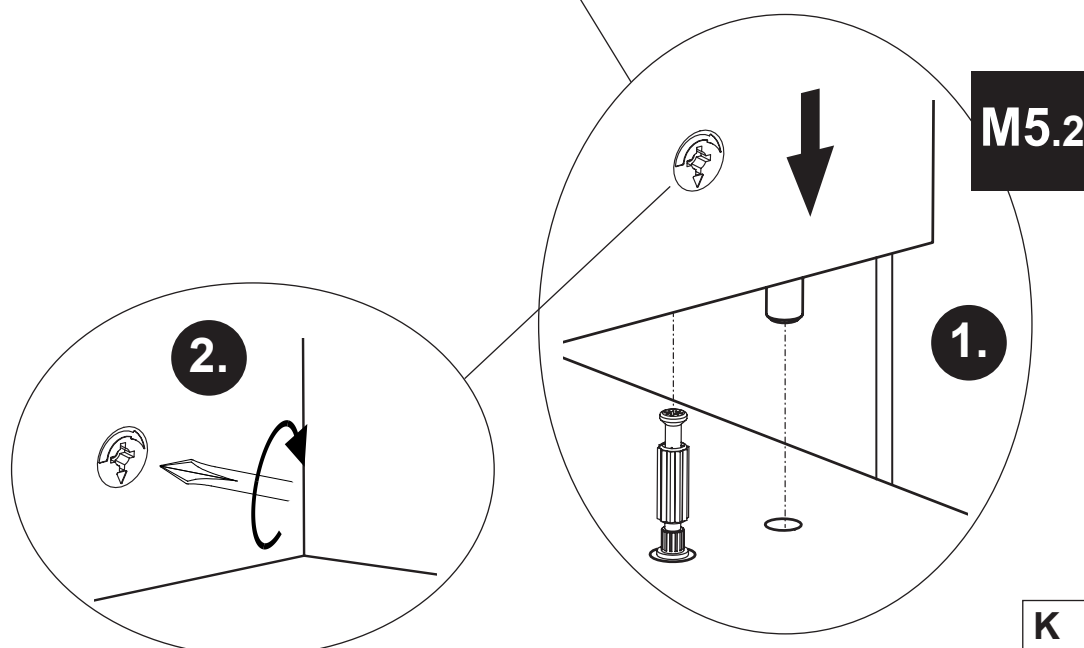
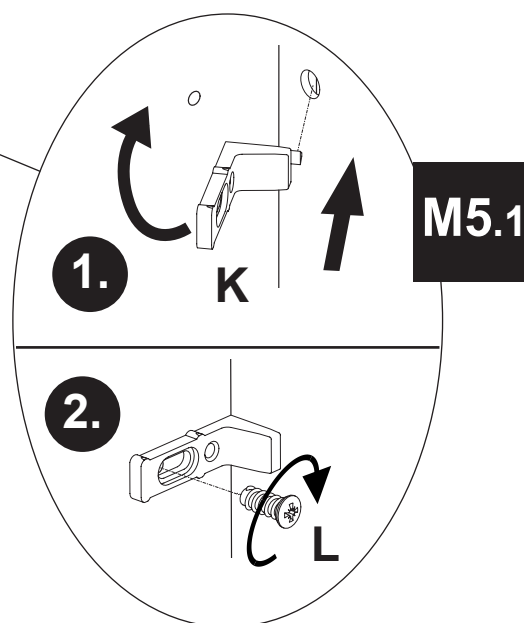
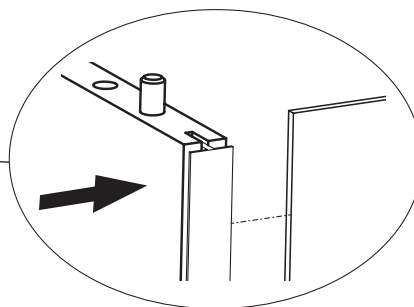
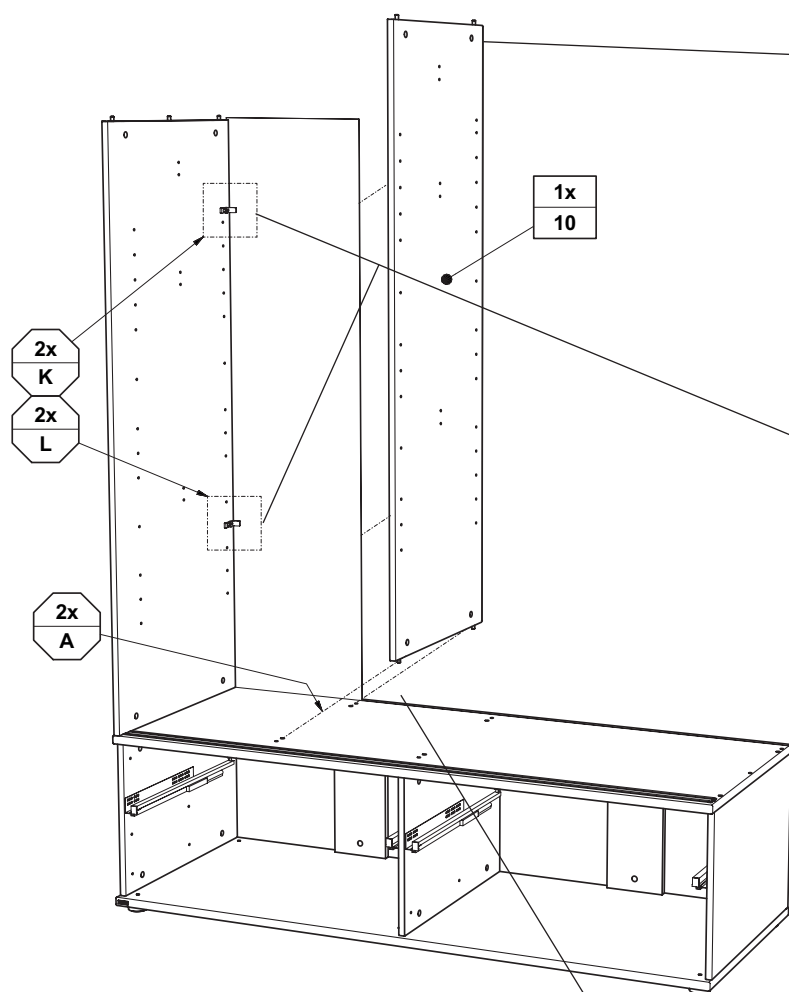


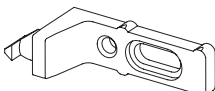

## Höhenverstellung !!

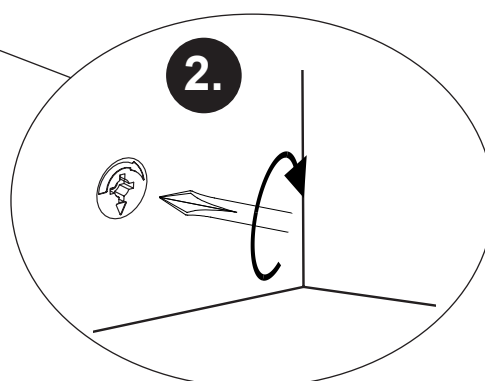
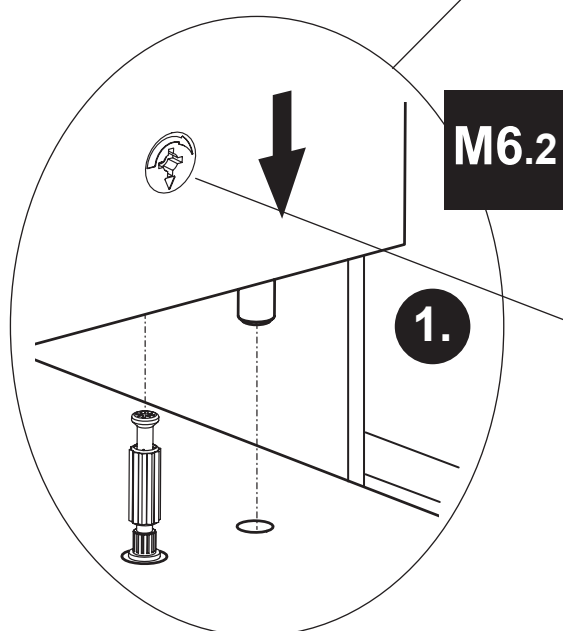
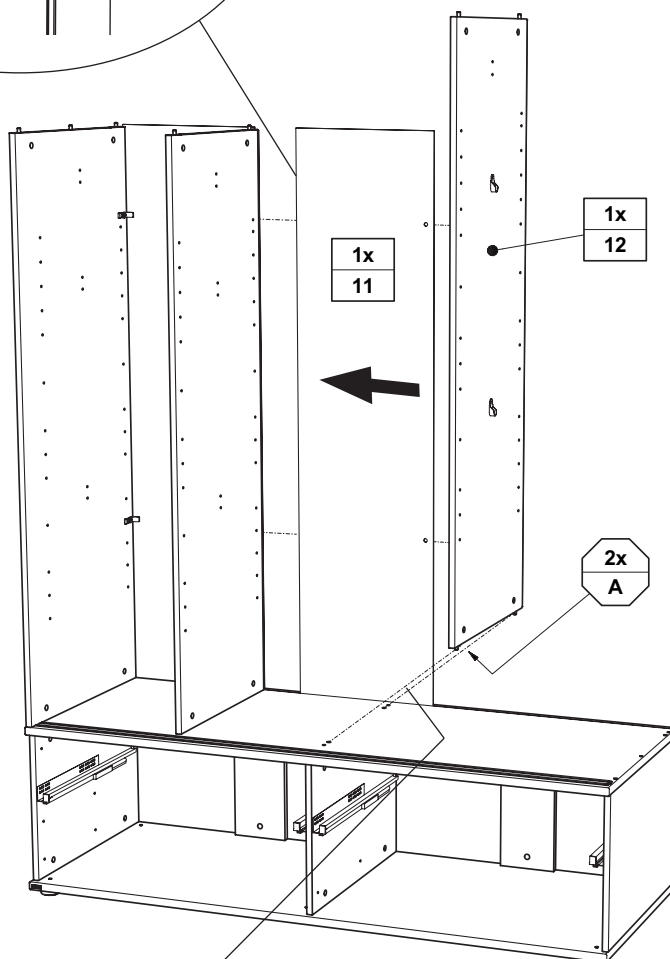
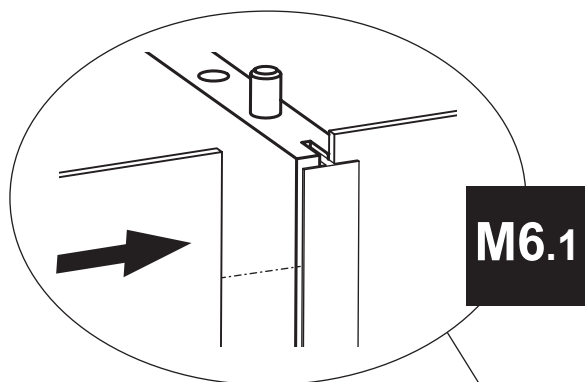




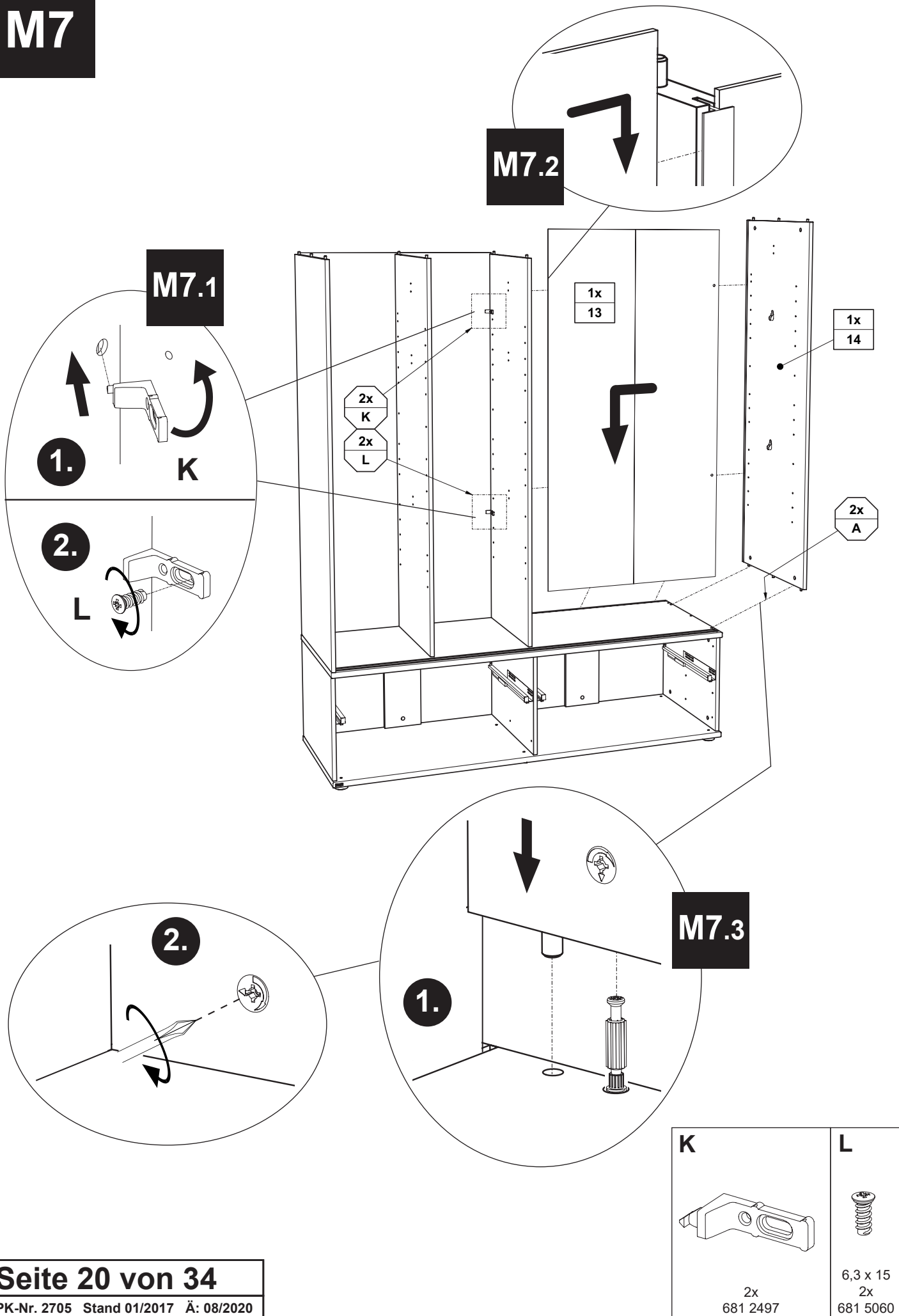




K	L
 2x 681 2497	 6,3 x 15 2x 681 5060



# M7



1x  
15

8x  
A

2x  
K  
2x  
L

**M8.1**

1.

K

2.

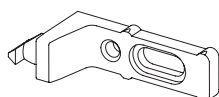
L

**M8.2**

1.

2.

**K**

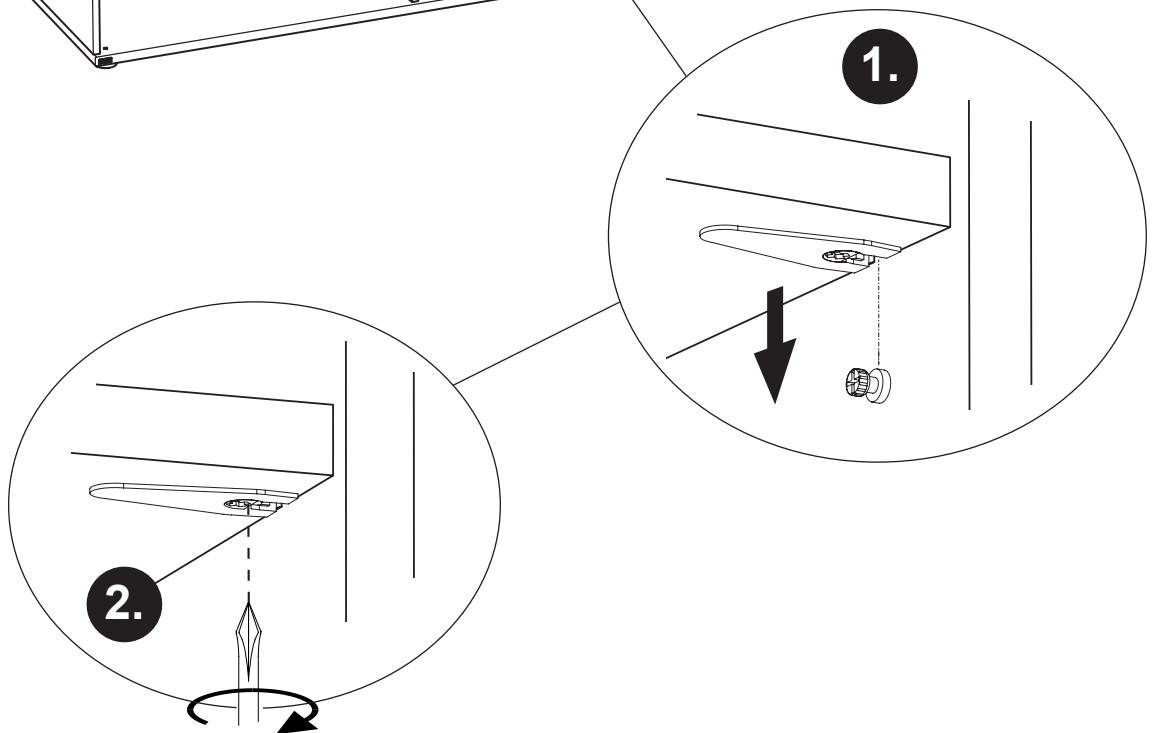
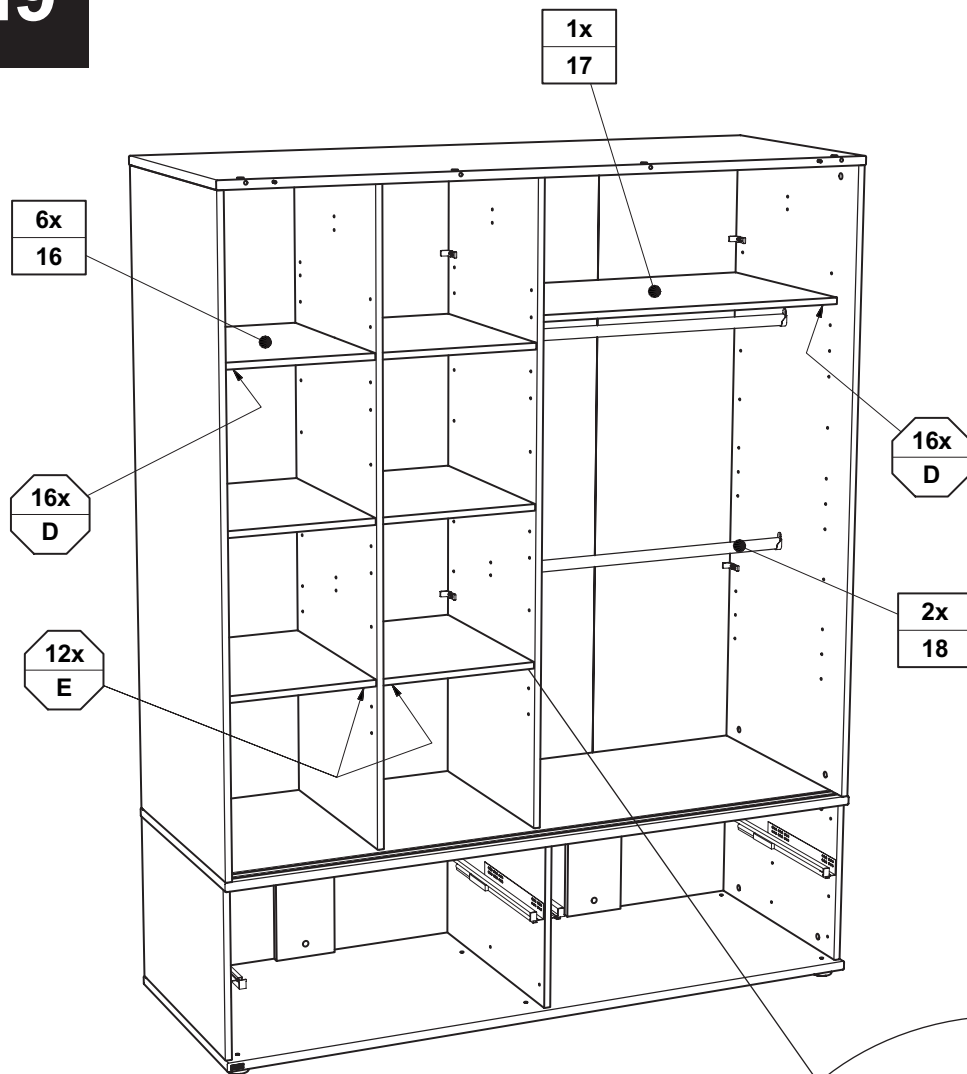


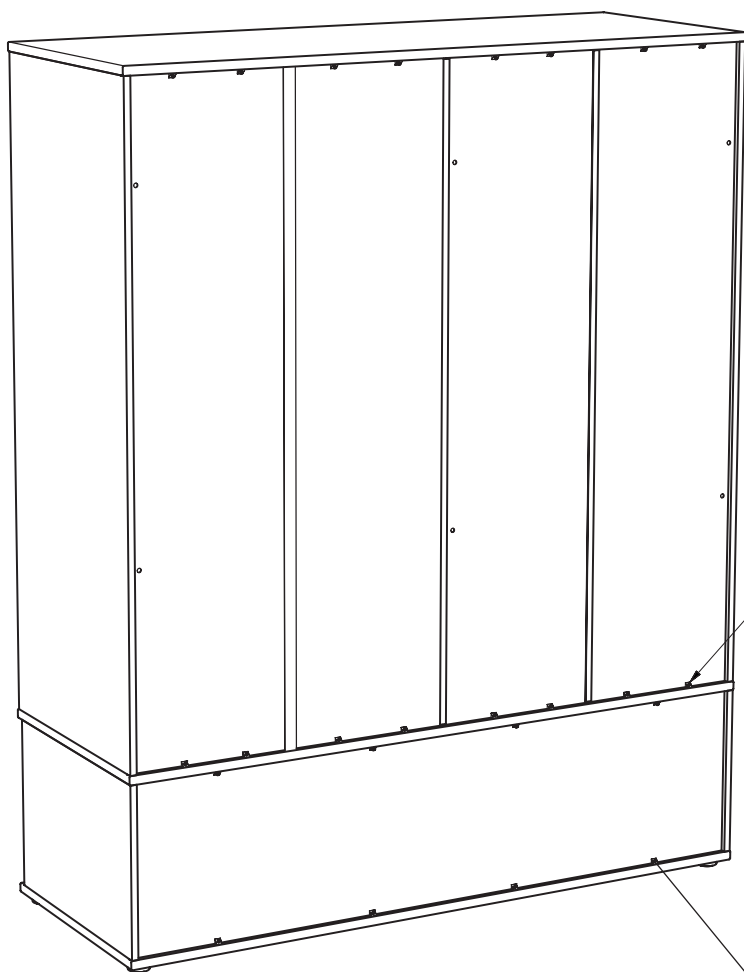
2x  
681 2497

**L**

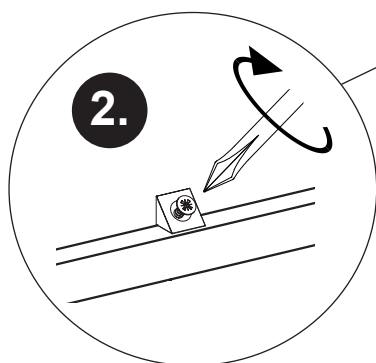
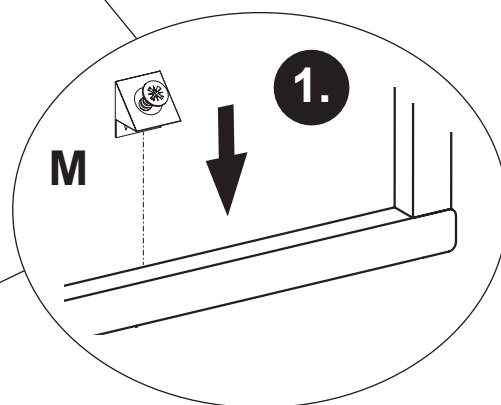


6,3 x 15  
2x  
681 5060





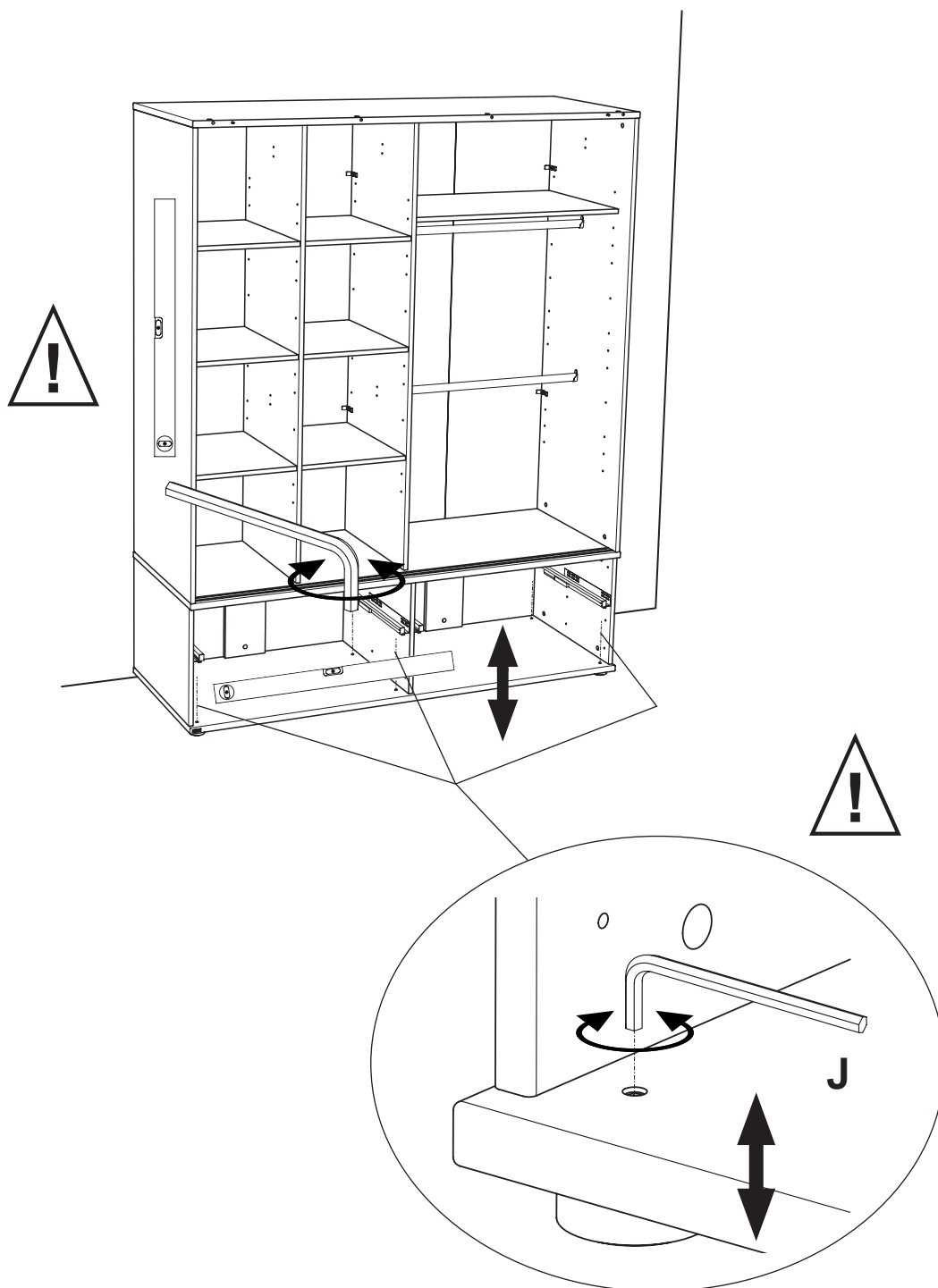
24x  
M



M



24x  
681 2498



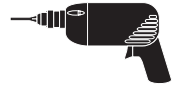
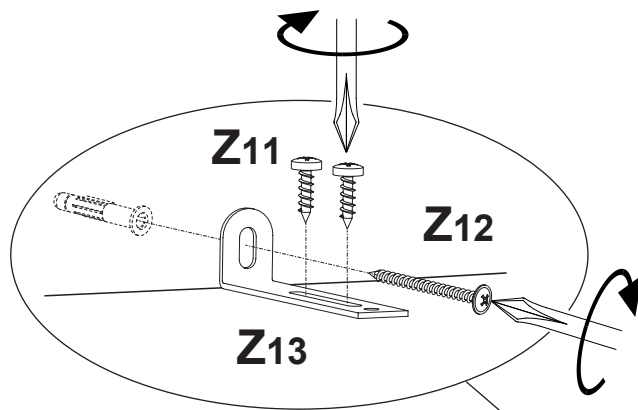
**Höhenverstellung !!**



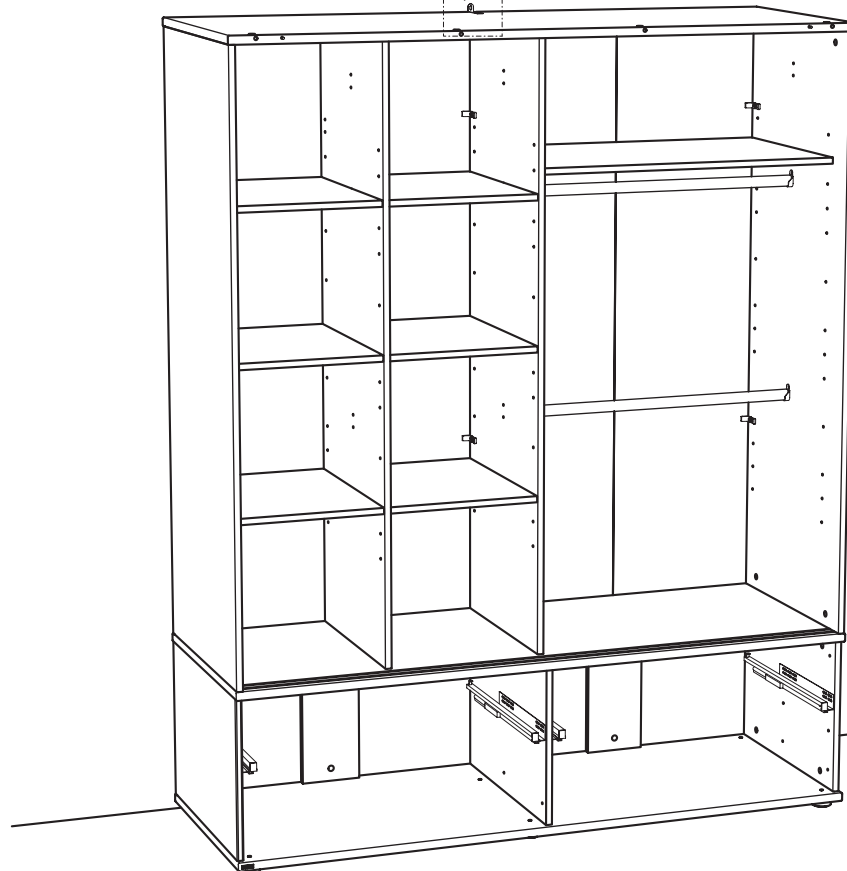
# Wandbefestigung !!

**ACHTUNG !!**

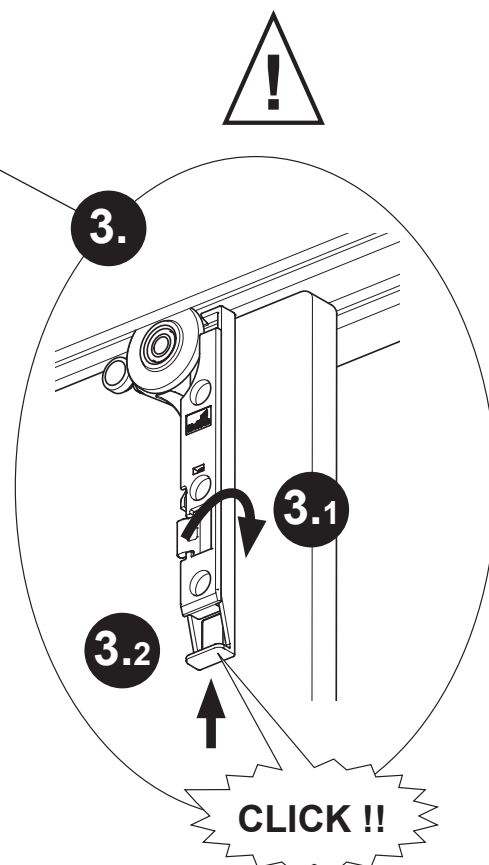
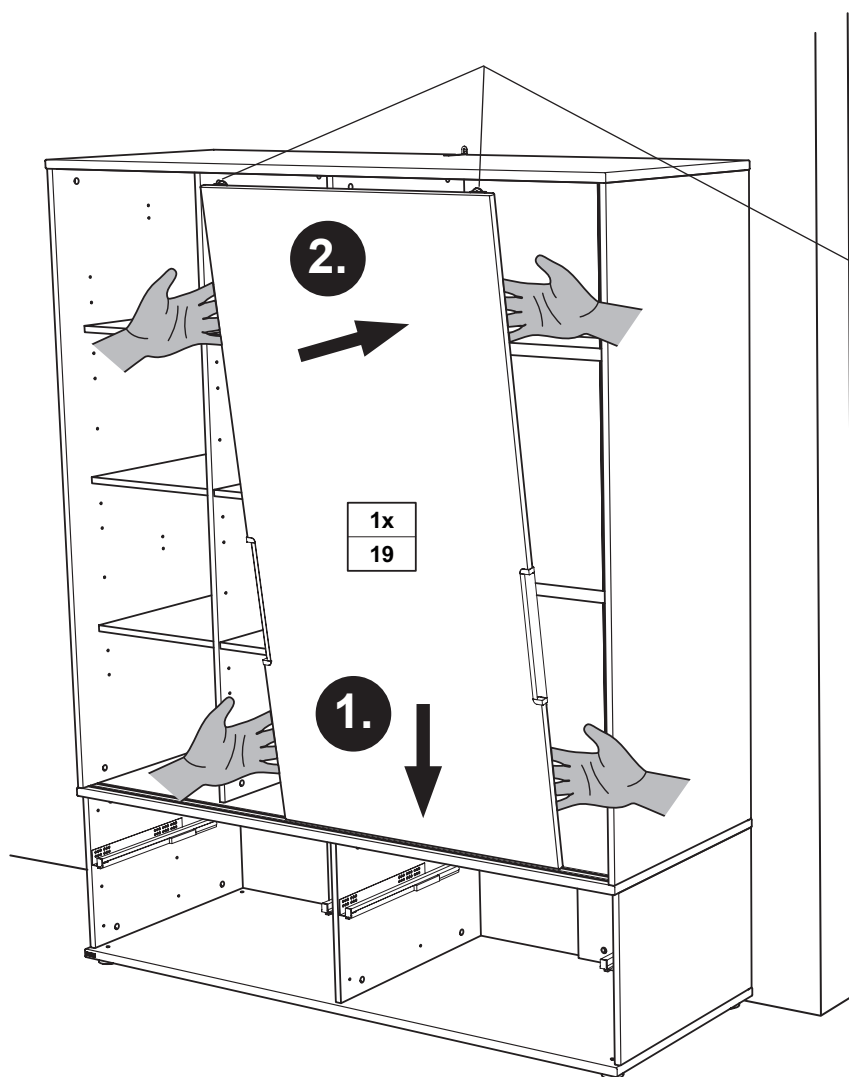
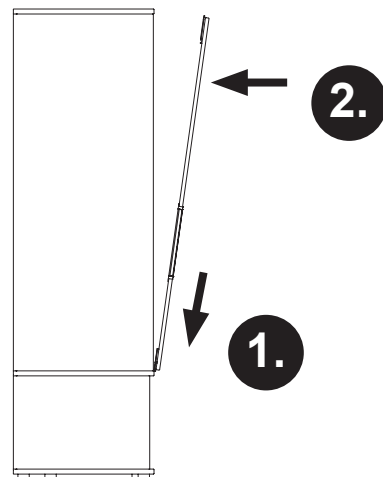
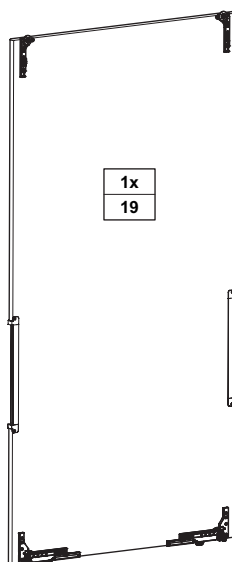
Beiliegende Wandbefestigungsmaterial ist nur für massives Mauerwerk geeignet.  
Bei massiv abweichendem Mauerwerk müssen geeignete Befestigungsmaterialien verwendet werden.  
Prüfen Sie ob die notwendige Festigkeit gewährleistet ist.



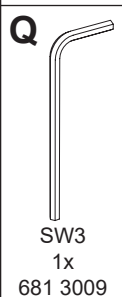
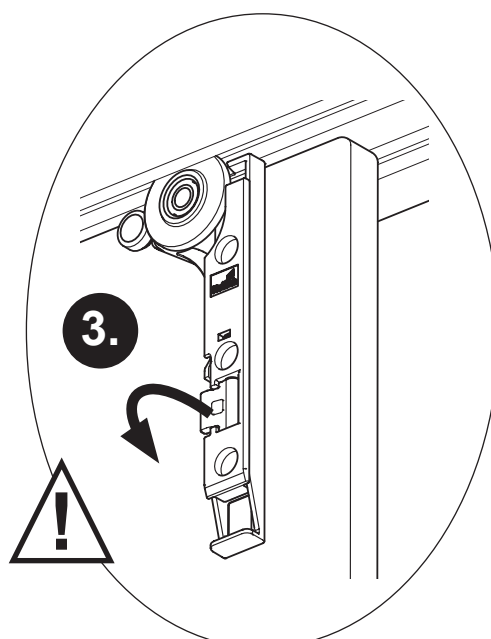
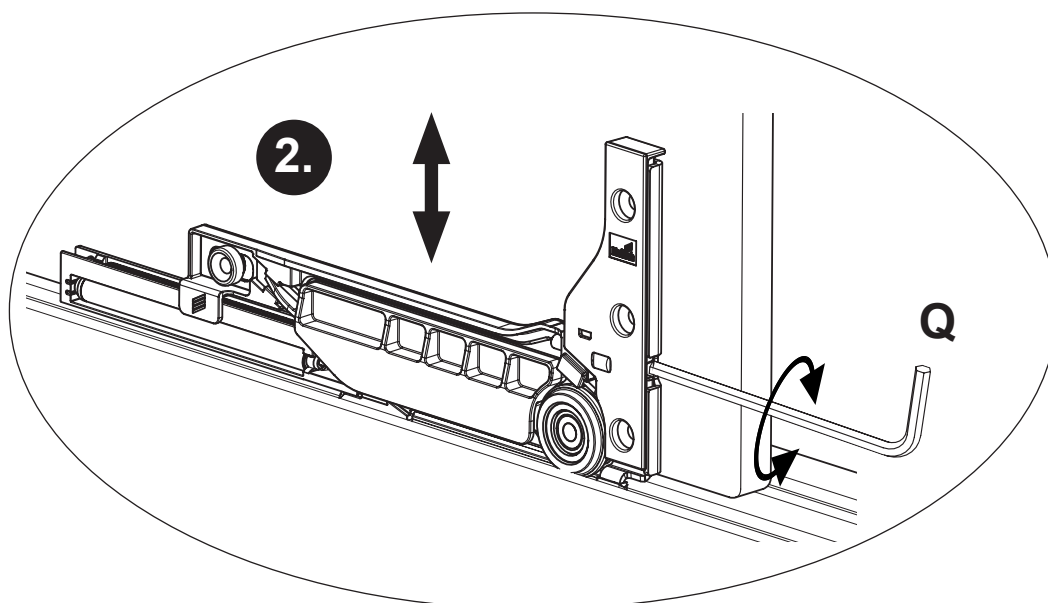
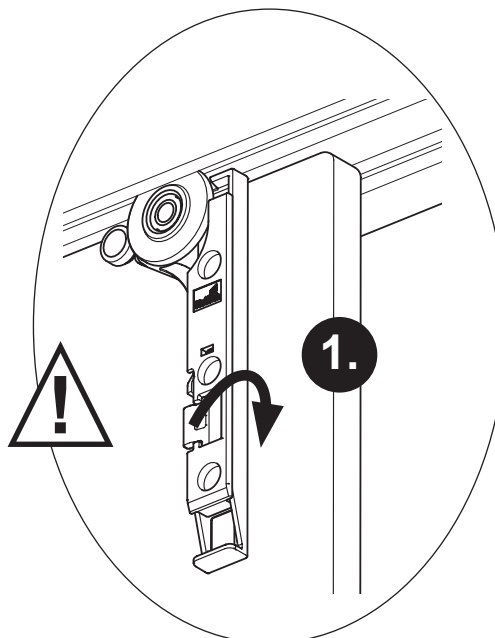
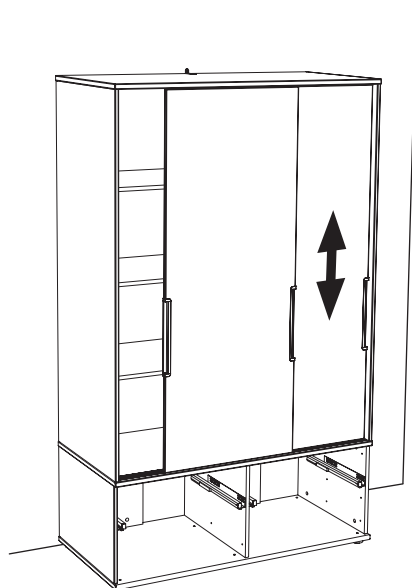
2x	1x	1x
Z11	Z12	Z13



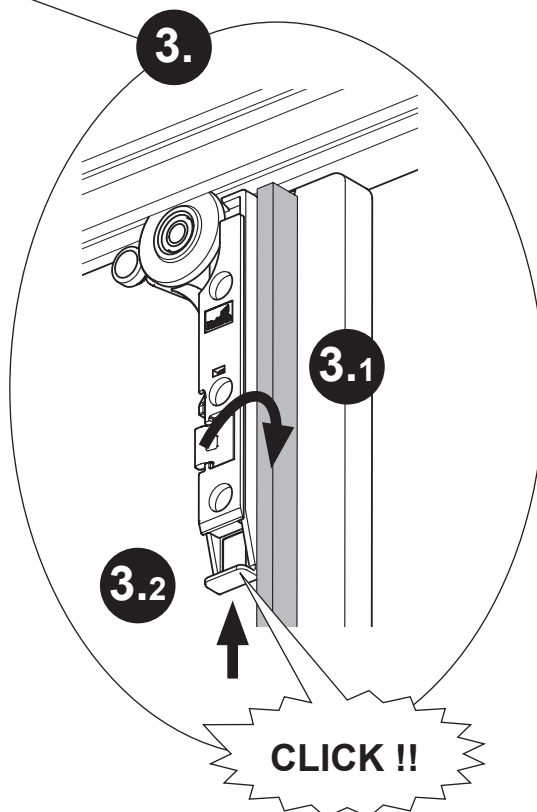
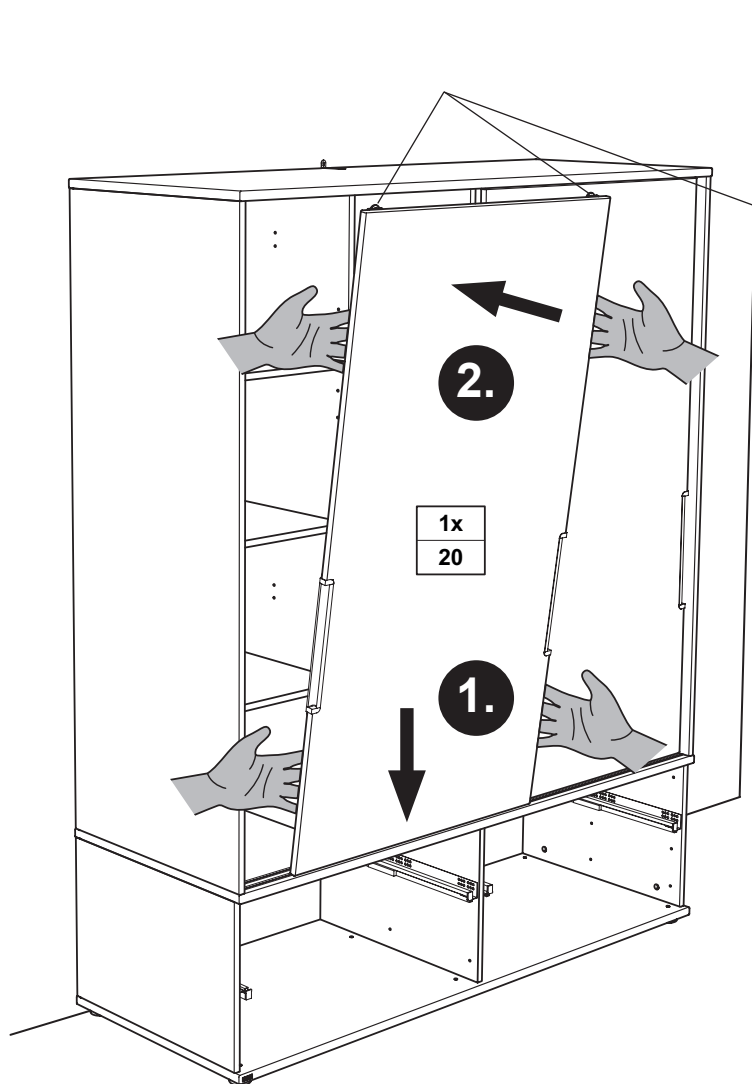
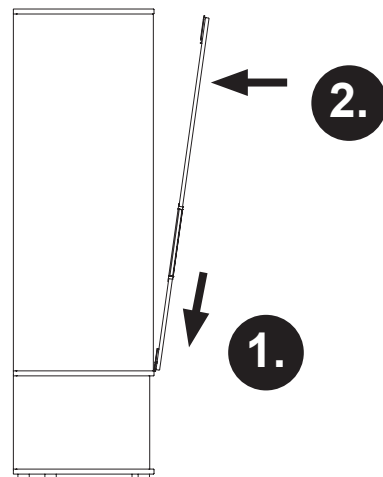
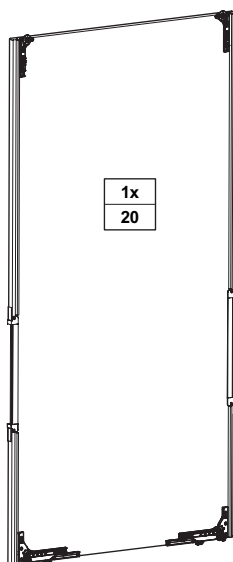
# M13



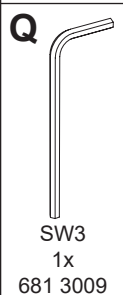
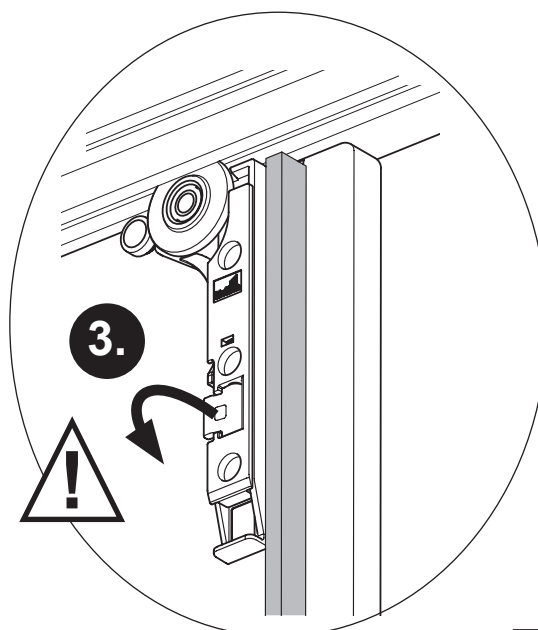
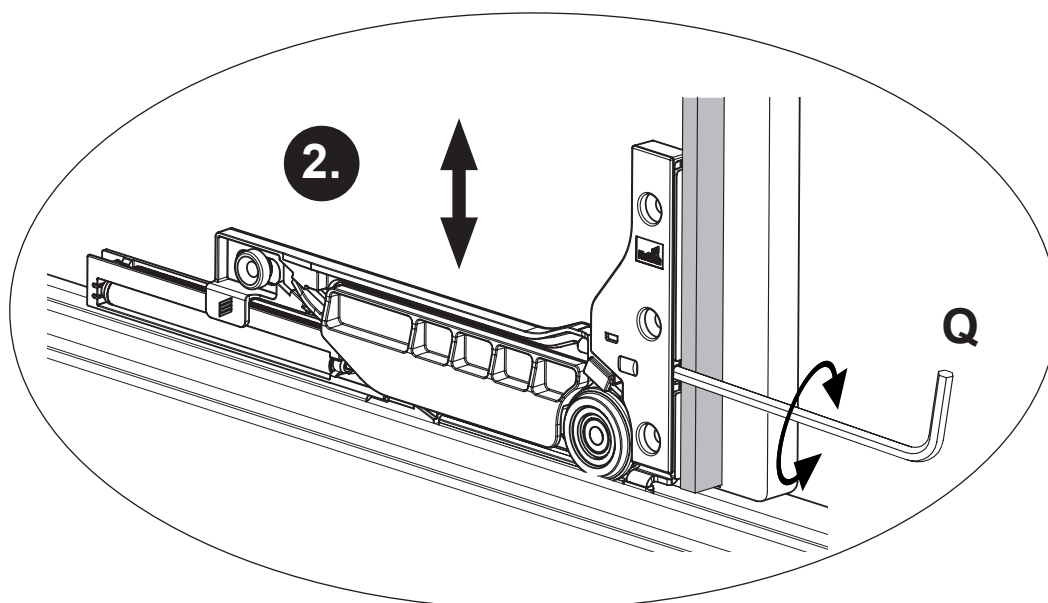
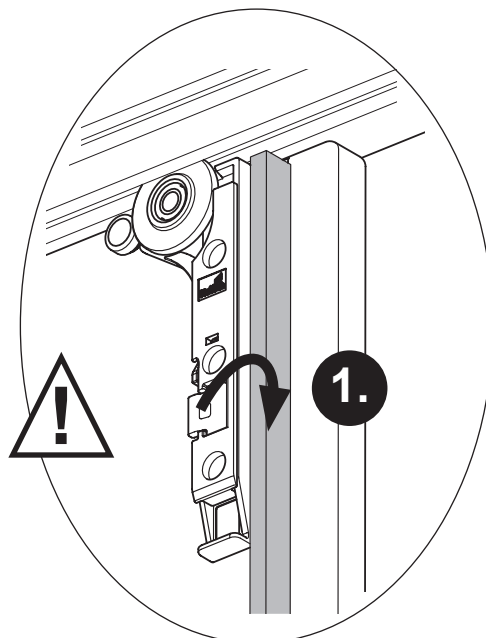
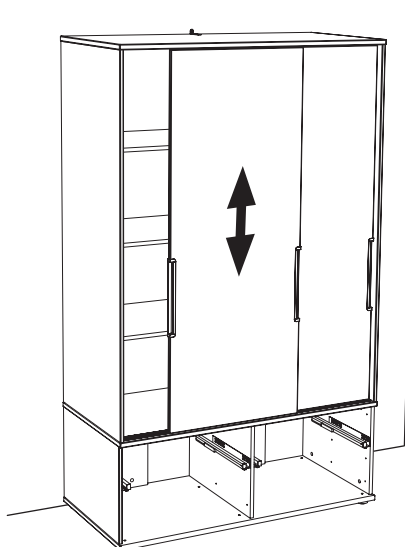
## Justierung der Schiebetür Hinten



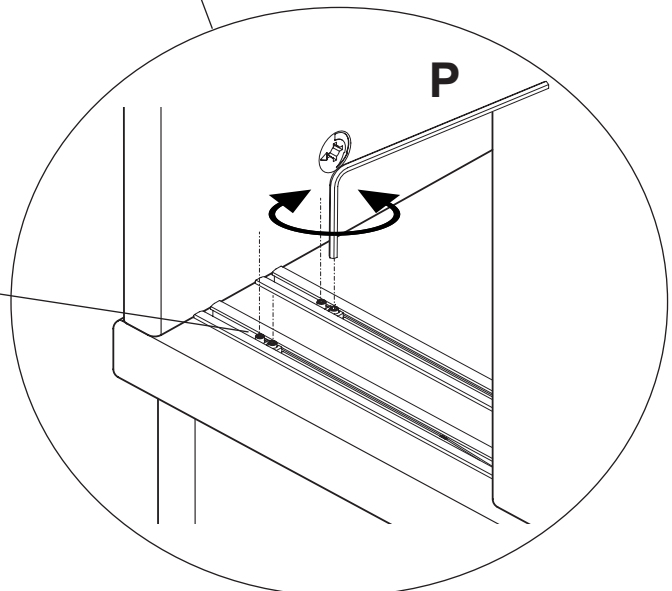
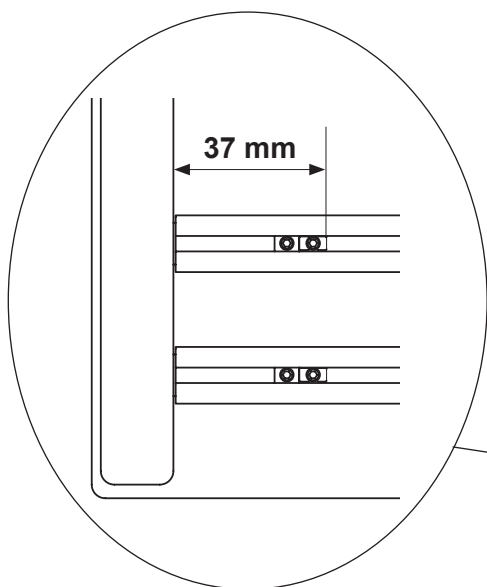
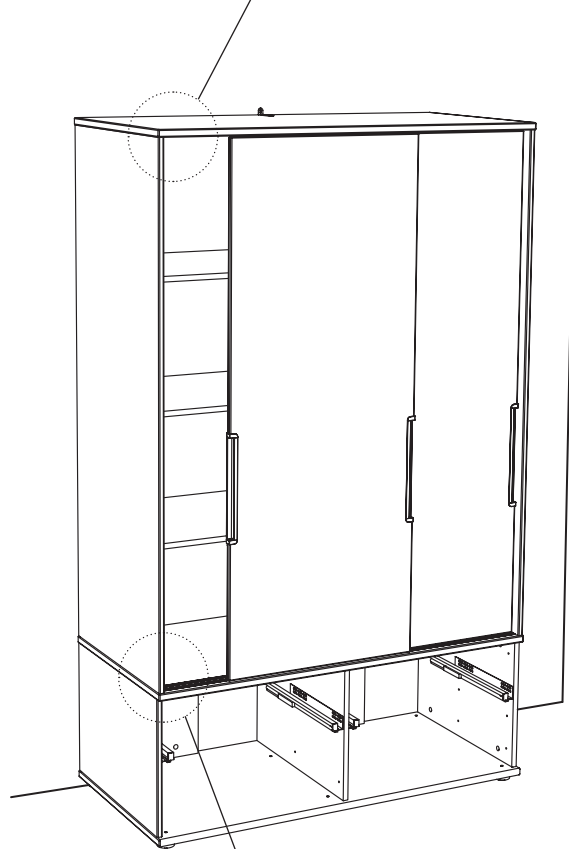
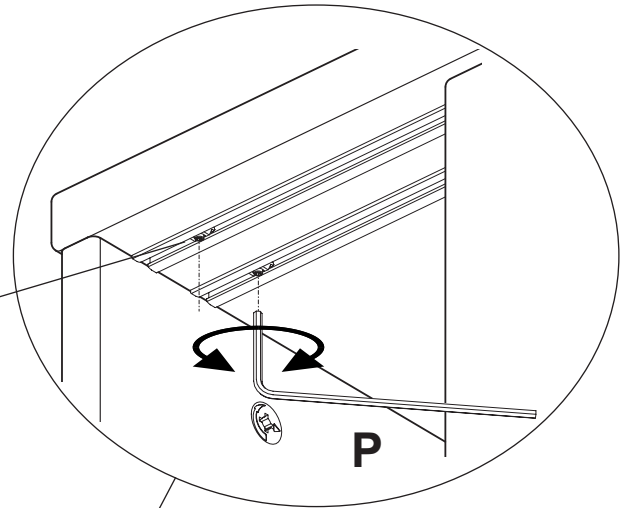
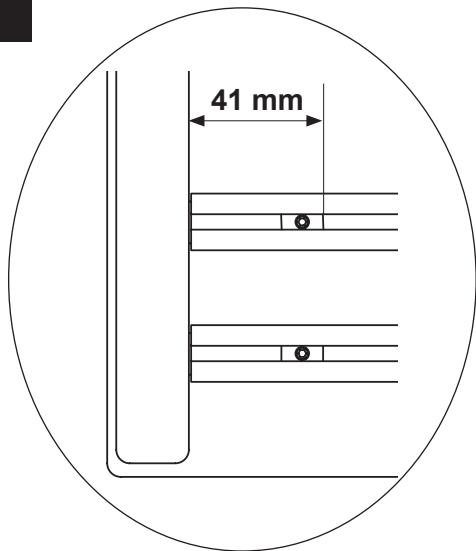
# M14

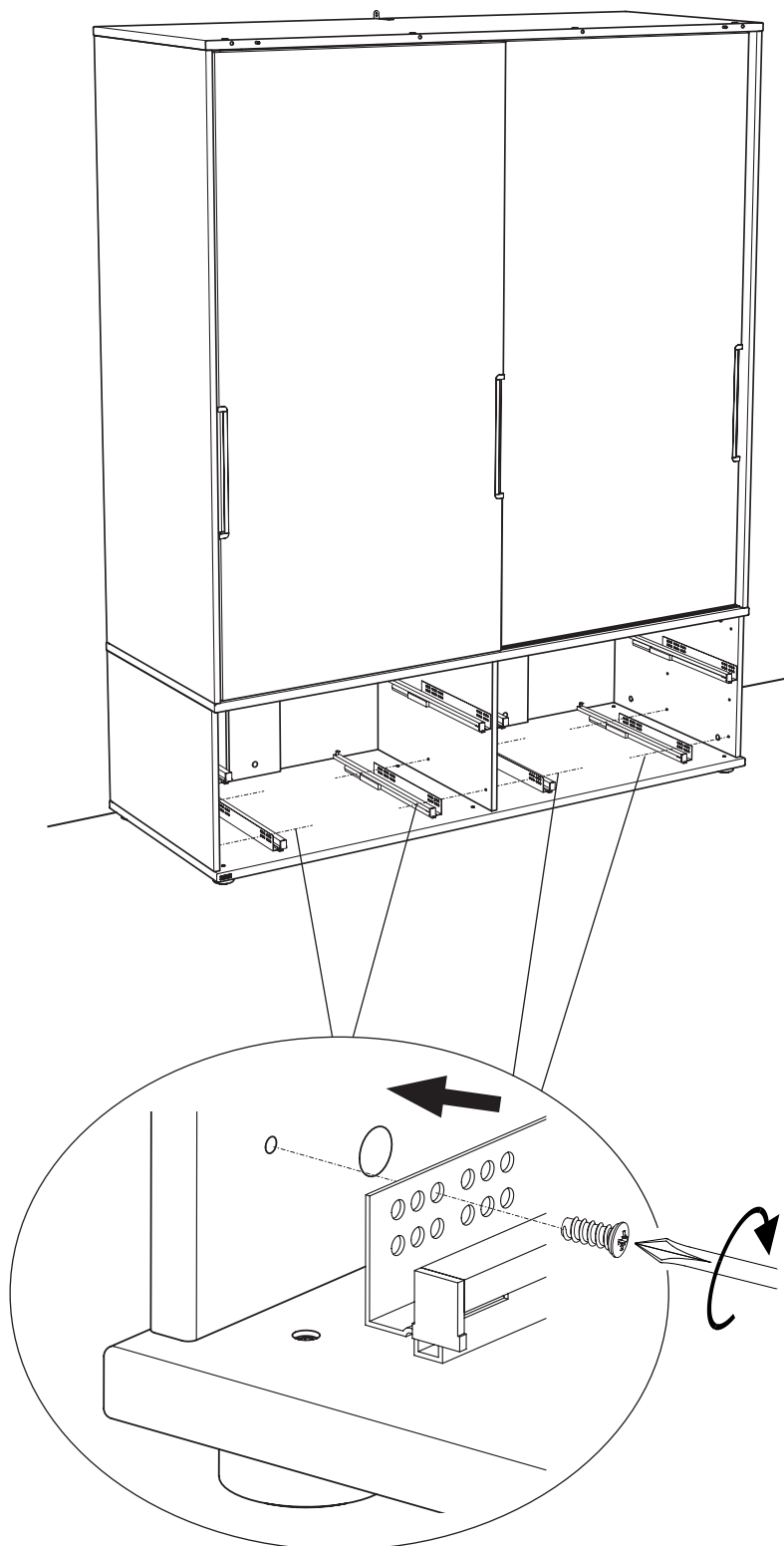


## Justierung der Schiebetür Vorne

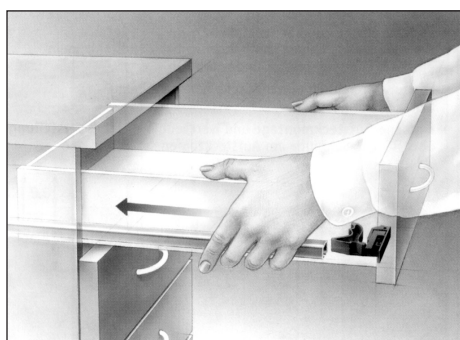
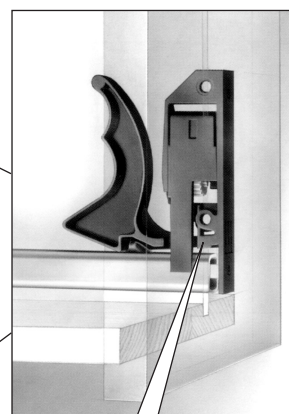
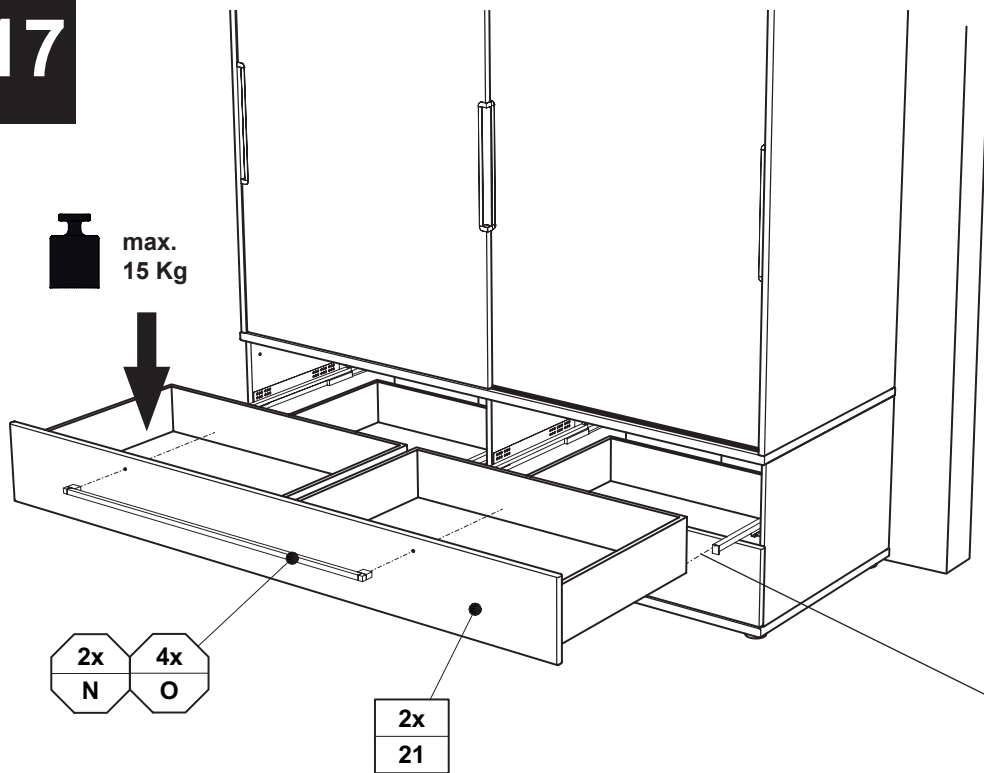


# M15

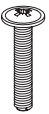




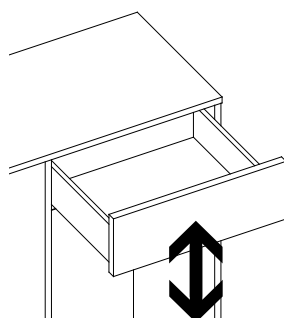
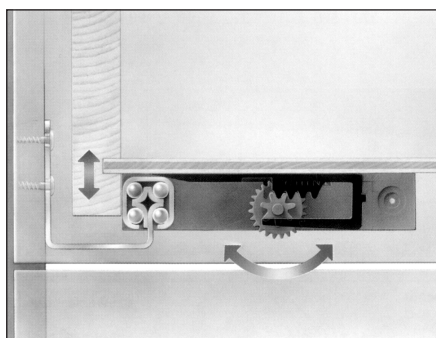
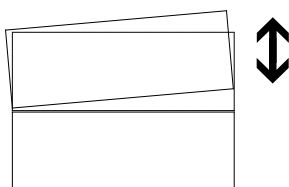
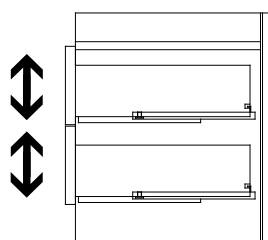
# M17



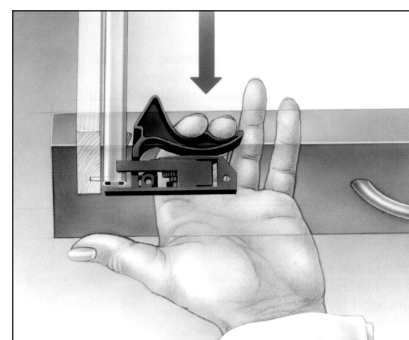
**CLICK !!**

N	O
Griffstange	
2x 671 1107 / 681 8440	M4 x 22 4x (8x) 681 3807

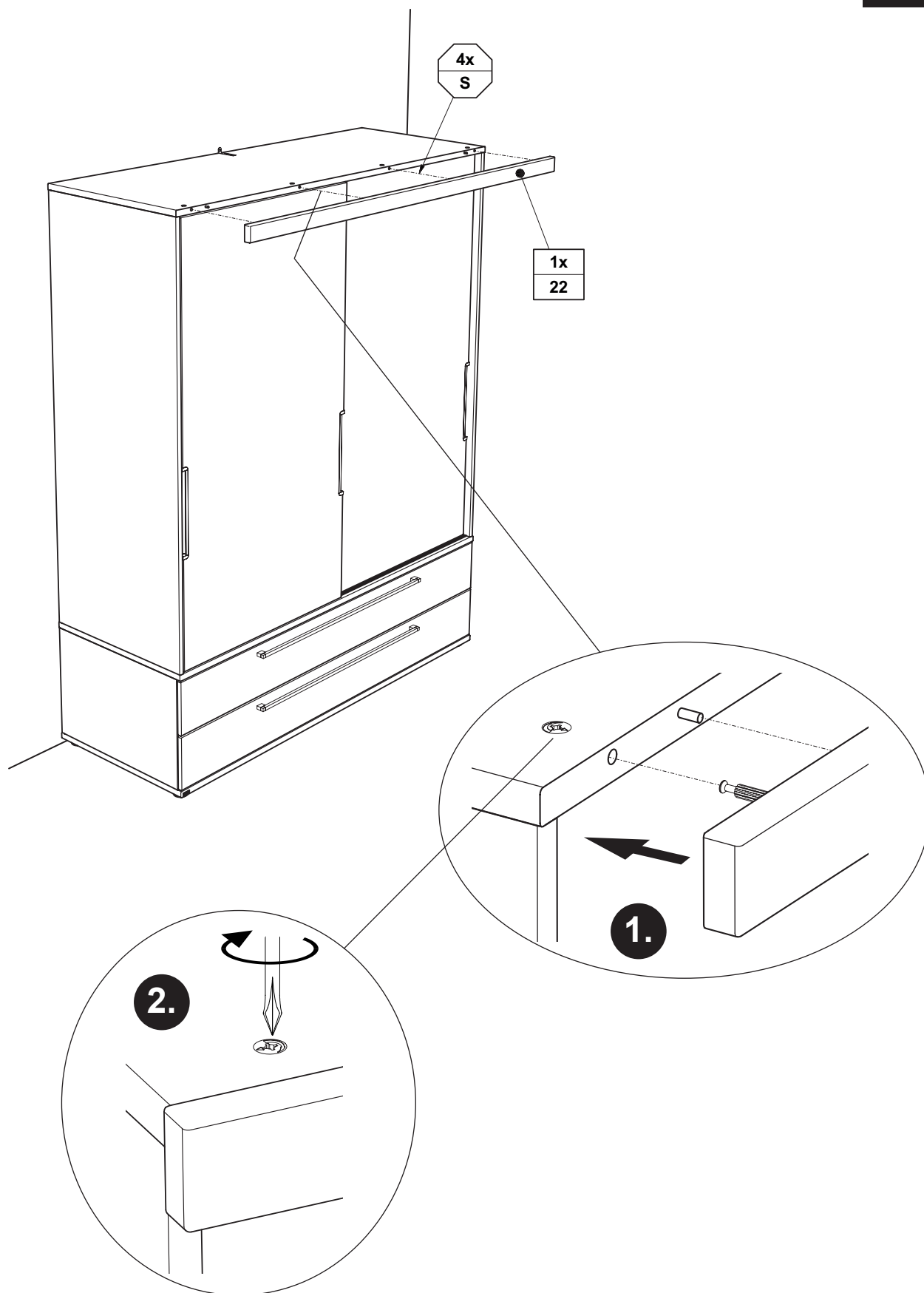
## Justierung der Schubkästen



## Demontage der Schubkästen







Bei defekten Beschlägen bitte  
**Code-Nr.** angeben.

